

en-us Use and Care Manual, Installation Instructions

Dryer
WTG86403UC



Welcome to Your New Dryer!

Congratulations on your selection of a new Bosch dryer for your laundry needs. We are confident you will enjoy the superior performance and reliability.

Please do not hesitate to contact our Customer Service department if you have any questions or comments about your new dryer.

Thank you for choosing Bosch.

Visit our website at www.bosch-home.com/us (USA) or www.bosch-home.ca (Canada) for more information and to view a selection of our products.

Table of contents

Important information	4	Drying tips	27
Purchase information	4	Program selection table	28
Customer service	4	Default Program and Option settings	29
Your dryer is intended for	5	Dry Level	29
Safety Definitions	5	Time dry	29
IMPORTANT SAFETY INSTRUCTIONS	6	Finish in	29
Introduction to your new dryer	8	Additional Program Option settings	29
Standard features and helpful information	8	Wrinkle Block	29
Special features	8	Low Heat	29
Environmentally friendly use of your dryer	8	Spin speed	29
Dimensions and clearances required	9	USER-MAINTENANCE INSTRUCTIONS	30
Installation for best performance	9	Cleaning the Dryer's exterior	30
Appliance dimensions	9	Cleaning the lint filter area	30
Length of power cord and drain hose	9	Cleaning the lint filter	30
Minimum clearances	10	Cleaning the Condenser	32
INSTALLATION INSTRUCTIONS	12	Cleaning the moisture sensors	33
Introduction	12	Maintenance of drain hose	33
Before installing the dryer	12	Replacing fuses in the Power Adapter - step-by-step	33
Waste disposal	13	Troubleshooting	34
Parts provided with your dryer	13	Introduction	34
Accessories for your appliance	14	General Troubleshooting	34
Installation - step by step and check list	14	STATEMENT OF LIMITED PRODUCT WARRANTY ..	37
Electrical Connections	16	Bosch Clothes Dryer	37
Leveling the dryer	18		
Check heating system	18		
Preparing to transport the dryer - step by step	18		
Getting to know your appliance	19		
Control panel	19		
Display area	20		
OPERATING INSTRUCTIONS	21		
Your new dryer	21		
Before using the dryer for the first time	22		
Temporary disconnection of the dryer	22		
Using program selector to choose a drying cycle	22		
Program selection	23		
Selecting program settings and additional options	23		
Loading the laundry	24		
Starting the program	24		
Indicator of program sequence	25		
Childproof lock	25		
Selecting a different program	25		
Cancel program	25		
Program end	25		
Removing laundry/switching the appliance off	25		
Signal	26		
Laundry	27		
Preparing the laundry	27		
Sorting the laundry	27		

Additional information on products, accessories, replacement parts and services can be found at **www.bosch-home.com/us (USA) or www.bosch-home.ca (Canada)** and in the online shop **www.bosch-home.com/us/store**

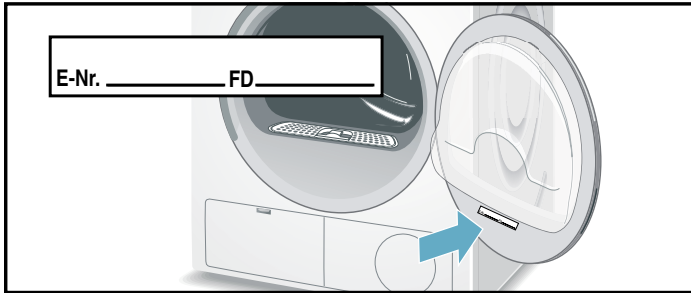
Questions?
1-800-944-2904
www.bosch-home.com/us (USA)
or
www.bosch-home.ca (Canada)
1901 Main Street, Suite 600
Irvine, CA 92614
We look forward to hearing from you!

Important information

Purchase information

Please take a moment to record the following basic information about the purchase of your new Bosch® dryer.

This information will be helpful in the event you need to contact Customer Service or would like to order accessories or replacement parts for your dryer.



The **E-Nr.** (model number) and the **FD** (serial) number can be found on the rating plate label (shown above) or in the Home Connect application under Appliance Information.

The model number includes the slash and a two digit number (eg: "/01"). Please be sure to include the final 2 digit number when filling in your model number. This helps make sure any parts you may need are correctly matched to your specific machine.

Date of Purchase: ___/___/___

Where Purchased: _____

E-Nr. : _____ / ____ (ex: WTG86xxxUC/01)

FD : _____ - _____ (ex: FD 9708|90007, provides production date)

The manufacturer reserves the right to make changes in the product or manual without notification.

Customer service

Your dryer does not require any special care other than the maintenance and care mentioned in this manual. If you have a problem with your dryer, please consult the Troubleshooting section of this manual.

→ *Troubleshooting; Page 34*

If problems persist and service is necessary, please contact our customer service department.

Do not attempt to repair the appliance yourself.

Bosch Customer Service

1-800-944-2904

Or by mail

BSH Home Appliances Corporation

1901 Main Street, Suite 600

Irvine, CA 92614

When writing or calling please have the following information available:

- E-Nr. (model number, example: WTG86xxxUC/01)
- FD (serial number, example: 9708|90007)
- Date of Original Purchase (receipt may be required)
- Date Problem Occurred
- Explanation of Problem

If writing, please also include a daytime telephone number and a copy of the sales invoice.

When calling Customer Service, please be ready to provide the model number **E-Nr.** and **FD** number. This information will help provide the best support for your dryer.

Additional information is available at our website:

www.bosch-home.com/us (USA) or www.bosch-home.ca (Canada).

Your dryer is intended for

- Only household use and in a non-commercial environment.
 - Drying textiles washed in a residential style clothes washer.
 - Operating conditions:
Recommended ambient temperatures:
59-86°F / 15-30°C.
Min/Max allowable temperatures: 41-95°F / 5-35°C.
Relative humidity: under 95%
 - Installation by qualified installers.
 - Installation in accordance with all regulatory requirements; if in doubt have the appliance installed by a specialist familiar with these requirements.
- Before using the appliance, read the use and installation instructions and all other information included with the appliance and act accordingly.
Keep all documents for future use.

Safety Definitions

Important safety information is contained in this manual and on the warning labels located on your dryer.

Standard symbols and headings are used to identify areas where you should take precautions to avoid injury or property damage. Please take a moment to become familiar with each of these symbols and what they mean before proceeding.

WARNING

This indicates that death or serious injuries may occur as a result of non-observance of this warning.

CAUTION

This indicates that minor or moderate injuries may occur as a result of non-observance of this warning.

NOTICE: This indicates that damage to the appliance or property may occur as a result of non-observance of this warning.

Tip: This symbol is used to draw the user's attention to important matters.

IMPORTANT SAFETY INSTRUCTIONS

READ AND SAVE THESE INSTRUCTIONS

WARNING

When properly cared for, your new appliance has been designed to be safe and reliable. Read all instructions before using the appliance. These precautions will reduce the risk of burns, electric shock, fire, and injury to persons. When using laundry appliances, basic safety precautions must be followed, including those in the following pages.

Examine the appliance after unpacking it. In the event of transport damage, do not plug it in.

WARNING

TO REDUCE THE RISK OF FIRE, ELECTRIC SHOCK, SERIOUS INJURY OR DEATH TO PERSONS WHEN USING YOUR DRYER, FOLLOW BASIC PRECAUTIONS INCLUDING THE FOLLOWING

- Bosch dryers are provided with a Use and Care Manual with Installation Instructions. Read and understand all instructions before using the dryer.
- Do not dry articles that have been previously cleaned, washed, soaked, or spotted with gasoline, dry cleaning solvents, other flammable or explosive substances as they give off vapors that could ignite or explode.
- Before the appliance is removed from service or discarded, remove the door (to the drying compartment) to prevent children from playing or hiding inside. Also remove the power cord/plug.
- Do not allow anyone to climb, lean or hang on any part of the dryer including any protruding components such as the appliance door or a pullout shelf.
- Do not reach into the appliance if the drum is moving.
- Do not tamper with the controls.
- Do not repair or replace any part of the appliance or attempt any servicing unless specifically recommended in the user maintenance instructions or in published user-repair instructions that you understand and have the skills to carry out.
- Do not use replacement parts that have not been recommended by the manufacturer (e.g. parts made by using a 3D printer).
- Do not use fabric softeners or products to eliminate static unless recommended by the manufacturer of the fabric softener or product.
- Always unplug the dryer from the power supply before attempting any service. Disconnect the power cord by grasping the plug, not the cord.
- To reduce the risk of fire, clothes, cleaning rags, mop heads and the like which have traces of any flammable substance, such as vegetable oil, cooking oil, petroleum based oils or distillates, waxes, fats, etc., must not be placed in the dryer. These items may contain some flammable substance(s) even after washing, which may smoke or catch fire by itself.

- Do not place items exposed to cooking oils in your dryer. Items contaminated with cooking oils may contribute to a chemical reaction that could cause a load to catch fire.
 - Do not use heat to dry articles containing foam rubber (may be labeled latex foam) or similarly textured rubber-like materials or equivalent. Foam rubber materials can ignite by spontaneous combustion.
 - Keep flammable materials and vapors, such as gasoline, away from the dryer.
 - Clean lint filter before or after each load.
 - Do not install or store this appliance where it will be exposed to the weather. Hoses and internal parts may be damaged if exposed to freezing temperatures.
 - Do not use the dryer if it has a worn power cord or loose plug.
 - The dryer must only be used for its intended purpose.
 - Always follow the fabric care instructions recommended by the clothing manufacturer.
 - Do not operate the dryer if parts are missing or broken.
 - Do not sit on top of the dryer.
 - To reduce the risk of fire or electrical shock, DO NOT use an extension cord to connect the dryer to the electrical power supply.
 - Always check pockets and remove any objects. Cigarette lighters are particularly hazardous.
 - Do not operate the dryer if any guards and/or panels have been removed.
 - Do not bypass any safety devices.
 - Do not operate this dryer until you are sure that:
 - All services connected to the dryer (power, drain, etc.) have been installed according to the Installation Instructions.
 - Installation and grounding are in compliance with all local regulations and/or other applicable regulations and requirements.
 - Failure to install, maintain and/or operate the dryer according to the manufacturer's instructions may result in injury and/or damage.
 - To avoid floor damage and mold growth, do not let spills or splashout cause standing water around or under the appliance.
 - See the Installation Instructions section in this manual for grounding requirements.
→ *Electrical Connections; Page 16*
 - The IMPORTANT SAFEGUARDS and WARNINGS presented in this manual do not cover all possible conditions that may occur. Common sense, caution and care must be exercised when installing, maintaining or operating the dryer.
 - Always contact your dealer, distributor, service provider or the manufacturer about any problems or conditions that you do not understand.
 - Follow the Safety Information in the INSTALLATION INSTRUCTIONS and the OPERATING INSTRUCTIONS.
-

IMPORTANT SAFETY INSTRUCTIONS

READ AND SAVE THESE INSTRUCTIONS

WARNING

WARNINGS FOR CHILDREN AND PETS

- Do not allow children and pets to play on or in the appliance. Close supervision of children is necessary when the appliance is used near children.
 - Make sure to utilize all child lock/safety features of your appliance, and be sure to turn the appliance **Off** when not in use.
 - Appliances are not intended for use by children, however when children become old enough to operate the appliance, it is the responsibility of the parents or legal guardians to ensure they are instructed in safe practices by qualified persons.
 - Keep all laundry aids (including detergents, bleach, fabric softeners, etc.) out of the reach of children.
 - Keep pets away from the appliance.
-

WARNING

PROPOSITION 65 WARNING

This product may contain a chemical known to the State of California, which can cause cancer or reproductive harm. Therefore, the packaging of your product may bear the following label as required by California:

STATE OF CALIFORNIA PROPOSITION 65 WARNING:



Cancer and Reproductive Harm - www.P65Warnings.ca.gov

SAVE THESE INSTRUCTIONS!

Keep these instructions for future reference and in case of change of ownership, manual should be conveyed with the dryer.

Introduction to your new dryer

▲ WARNING

RISK OF FIRE, ELECTRIC SHOCK OR INJURY

To reduce the risk of fire, electric shock or injury to persons, read the IMPORTANT SAFETY INSTRUCTIONS of this manual before installing or operating this appliance.

→ *IMPORTANT SAFETY INSTRUCTIONS; Page 6*

Standard features and helpful information

Thank you for choosing Bosch for your laundry appliance needs.

Please read and follow the use and care, important safety instructions and troubleshooting information contained in this manual. Please retain this manual for future reference.

→ *Troubleshooting; Page 34*

This dryer complies with UL 2158 Electric Clothes Dryers.

Standard features

- ENERGY STAR® certified to save energy, save money and protect the climate.
- Temperatures inside the drum are lower than conventional dryers for gentle drying conditions and fabric care.
- Sensor controlled auto cycles.
- 15.4 lb (7 kg) large drum capacity (for regular cotton loads).
- Large door opening, 180° opening angle.

Quality tested

Each dryer which leaves our factory has undergone a thorough performance test and is in full working condition.

Website

Visit our website at www.bosch-home.com/us (USA) or www.bosch-home.ca (Canada) for more information and to view a selection of our products.

About this manual

These operating and installation instructions apply to more than one model of dryer. Illustrations used may show details that differ from your particular model.

Read your user manual. It contains valuable information about the safety, installation and operation of your new appliance.

This can save you time, make it easier to correctly install and use your dryer, and improve your overall satisfaction with your new appliance.

Special features

- A distinctive feature of your dryer is low energy consumption as it is ENERGY STAR certified.
- Bosch dryers feature advanced operation philosophy, customized drying programs and a solid touch and feel making them a user-friendly household assistant.
- Bosch load sensing feature controls power consumption for each cycle based on the amount and type of laundry. This automatic feature optimizes energy efficiency.

Environmentally friendly use of your dryer

Your new Bosch dryer is designed to use energy in a highly efficient way to help reduce operating costs, conserve resources and protect the environment.

To save energy, money and time, Bosch recommends the following:

- **Spin the laundry thoroughly**
Before drying, spin the laundry thoroughly in the washing machine. Use the highest possible spin speed for the type of laundry. Higher spin speeds reduce the drying time and the energy consumption.
- **Optimize load and selected drying program**
 - Use the maximum amount of laundry for the appropriate drying program.
 - Use automatic drying programs for the most energy efficient use of your dryer. They perform according to internal moisture and temperature sensors delivering optimized efficiency and fabric care.
 - Use the Time Dry program for touching up damp loads or for small loads. This program will use more energy than the automatic programs.
→ *Program selection table; Page 28*

NOTICE: The energy rating of this dryer is based on the Cotton Dry program with the Dryness Level set to +2 (all other option settings are off).

- **Clean filter**
Clean the lint filter before or after each drying process.
→ *Cleaning the lint filter; Page 30*
- **Air inlet on the dryer**
Do not cover or allow any articles/items to restrict the air inlet on the front of the dryer.
- **Energy-saving mode**
The display panel lighting goes out after a few minutes and **Start/Pause** flashes. To activate the display, touch any button.
Energy-saving mode is not activated if a program is running.

Dimensions and clearances required

Installation for best performance

⚠ CAUTION

DO NOT INSTALL THE DRYER:

- outdoors,
- in an environment with dripping water,
- near flammable materials,
- in rooms which are at risk of freezing,
- in rooms which may contain gas or other fuels,
- on carpets.

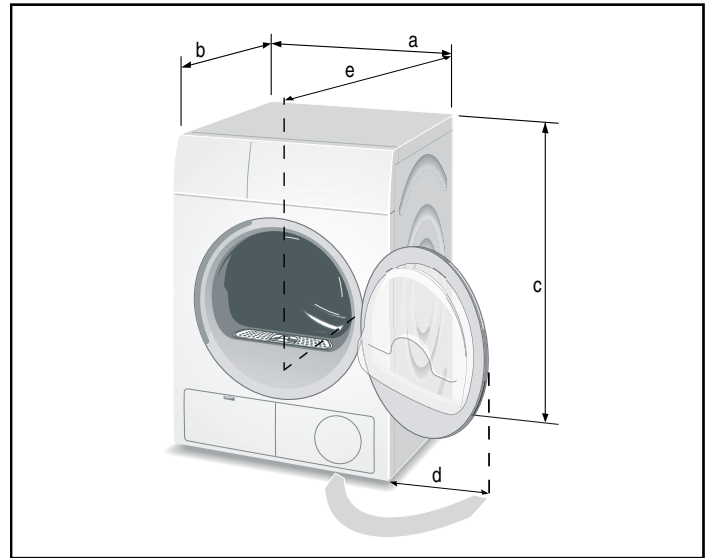
Because many variables affect drying time we recommend allowing as much free air space around your dryer as possible for the shortest drying cycle time.

NOTICE: If your dryer is located in a closet, leave the closet door open while the dryer is operating.

The recommended ambient temperatures (between 59-86°F / 15-30°C) are for optimum drying times, outside of this range drying times may be longer.

The installation surface (floor) must be level and structurally sound. Using a bubble level and the height-adjustable feet installed on the appliance, level the appliance side to side and front to back.

Appliance dimensions



Label	Dimension	U.S. Inches	Metric cm
a	Width	23.6	60
b	Depth (to front of door)	25	63.5
c	Height (minimum)	33.2	84.3
	Height (maximum)	34	86.4
d	Side clearance (door open 180°)	16	40.6
e	Depth (door open 90°)	42.9	109

Length of power cord and drain hose

	To Left*		To Right*	
	U.S. Inches	Metric cm	U.S. Inches	Metric cm
Power Cord	40	102	57	145
Drain Hose	19	48	40	102

* Facing the front of the dryer

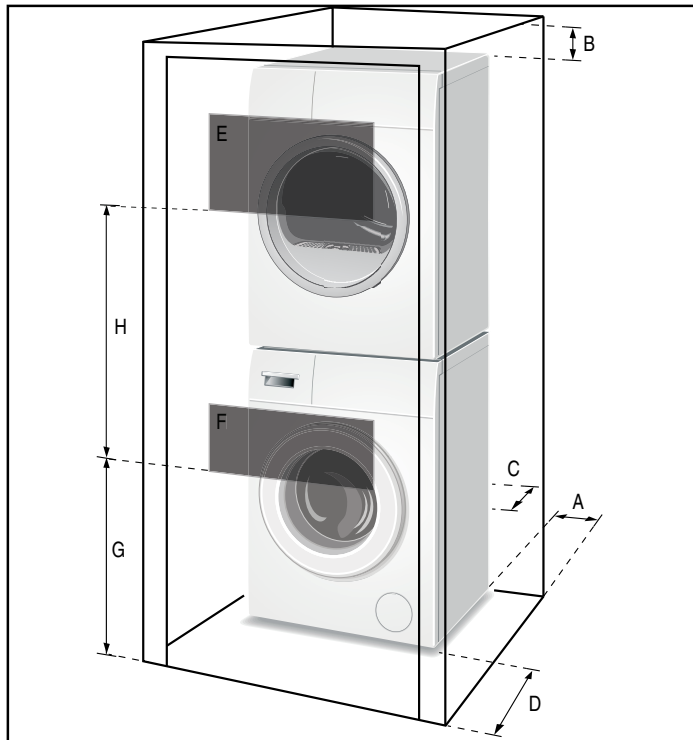
Minimum clearances

Closet: Stacked

Only with one of the Bosch required Stacking Kits (sold separately), can this Bosch Dryer be stacked on top of a Bosch Washer of the same dimensions to save space.

⚠ CAUTION

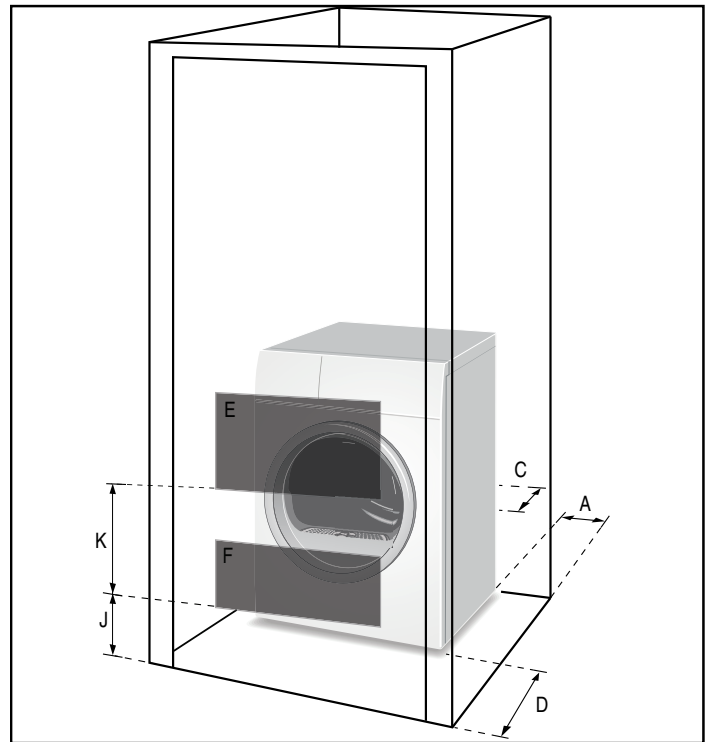
- Use only the dryer stacking kit noted in this User Manual's Accessories section.
- Do not stack washer on top of dryer.
- Do not stack washer on top of another washer.
- Ensure washer transportation bolts have been removed and washer does not vibrate excessively.



For shortest drying times keep closet door open while dryer is operating.

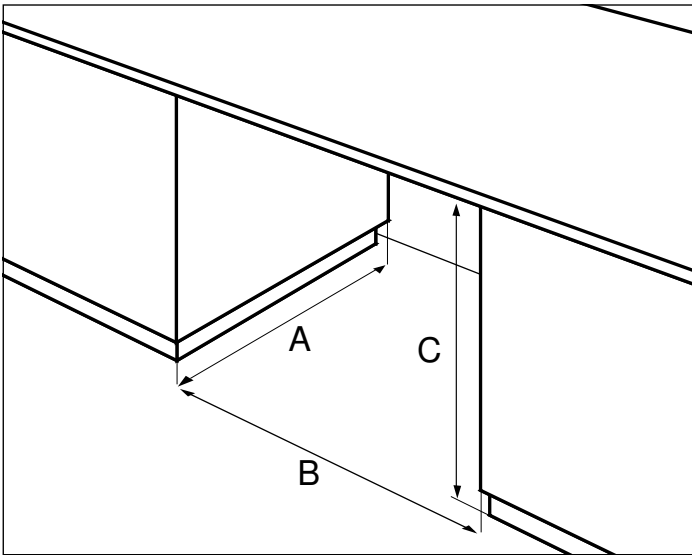
NOTICE: When closet doors are closed louvered areas only allow minimal drying results (expect long drying times).

Closet: Stand alone (shown) or Side by Side



Label	Dimension	U.S. Inches	Metric cm
A	Both Sides	0.6	1.5
B	Top	6.3	16
C	Rear	2.5	6.2
D	Front	2.4	6
E & F are minimum area size!			
E	Top Vent	63 sq.	404 sq.
F	Bottom Vent	63 sq.	404 sq.
Vent spacing is actual (not minimum dimensions)			
G		37	94
H		26	66
J		3	7.6
K		29	73.6

Under counter (Preferred)

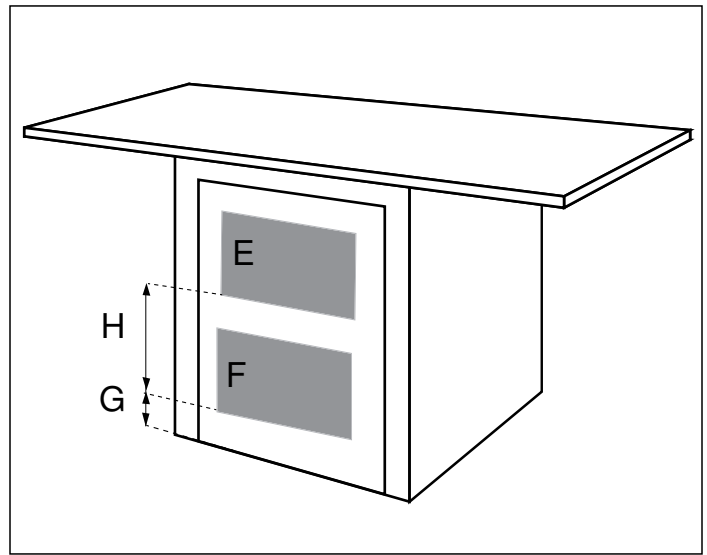


Front of the appliance fully open.
No doors or coverings.

Minimum opening dimensions

A	28 in.	71.1 cm
B	23.8 in.	60.5 cm
C	34.5 in.	87.6 cm

Under counter (Less Desirable)



If front of the appliance is covered ventilation openings must be installed.

E & F are minimum area sizes

E	63 sq.in.	404 sq. cm
F	63 sq.in.	404 sq. cm

G & H

actual spacing dimensions for min. open area sizes

G	3 in.	7.6 cm
H	14 in.	35.6 cm

INSTALLATION INSTRUCTIONS

READ AND SAVE THESE INSTRUCTIONS

Introduction

Read these installation instructions completely and carefully before starting to install your new dryer. The information contained can save you time and effort and will help to ensure optimum performance of your new dryer. Be sure to observe all warnings and cautions.

WARNING

▲ WARNING

RISK OF FIRE, ELECTRIC SHOCK OR INJURY TO PERSONS

- To reduce the risk of fire, electric shock or injury to persons, read the Important Safety Instructions at the beginning of this manual before installing or operating this appliance.
 - To reduce the risk of severe injury or death, follow all installation instruction.
 - Clothes dryer installation must be performed by a qualified installer, according to these instructions and according to all local codes.
 - In addition to the installation and safety information in this manual, the local water and electric authorities (services) may have special requirements that must be followed.
 - Install the clothes dryer according to these manufacturer's instructions and local codes.
 - Your dryer is supplied with a specific power adapter that is only to be used with the Bosch Washers and Dryers having NEMA 6-15P cords. Any other use of this power adapter is prohibited. Read and follow the Important Safety Instructions supplied with the Power Adapter.
-

▲ CAUTION

- The appliance is heavy. Do not lift it by yourself, use additional help and care when lifting and positioning.
 - If in doubt, have the appliance installed by an authorized service provider.
 - Take care to not damage the appliance. Do not hold on to protruding parts (e.g. door) when lifting. Do not push against the appliance door glass due to risk of damage.
 - Do not install the appliance outdoors or in an area exposed to freezing conditions.
 - If freezing conditions exist where appliance is located all drain water must be removed from hoses, sumps, pumps, etc.
 - Hidden surfaces may have sharp edges. During service wear gloves and use caution when reaching inside the dryer housing.
-

These installation instructions are intended for use by qualified installers. In addition to these instructions, the installation must comply with:

- for the United States - National Electrical Code, ANSI/NFPA70 - and latest editions of the state and municipal and/or local regulations.
- for Canada - Canadian Electrical Code C22.1 - and the latest editions of the provincial, municipal and/or local regulations.

Before installing the dryer

Unpacking the appliance

▲ CAUTION

Remove the appliance packaging carefully to prevent damage to the surfaces.

After removing the packaging, immediately remove all objects from the drum.

Check the dryer for transportation damage. Do not connect the utilities (power or drain) to a dryer which is visibly damaged. If in doubt, contact your dealer.

Waste disposal

Disposal of Packaging Materials

After unpacking your new appliance dispose of the protective packaging materials in an environmentally friendly way. Ask your dealer or inquire with your local authority regarding currently acceptable means of disposal.

▲ WARNING

WARNINGS FOR CHILDREN

Do not let children play with packaging and associated parts to avoid risk of choking or suffocation.

Disposal of Your Old Appliance

Your old appliance can be recycled if it is no longer to be used. Prior to disposing of your old appliance observe the following precautions to reduce safety risks.

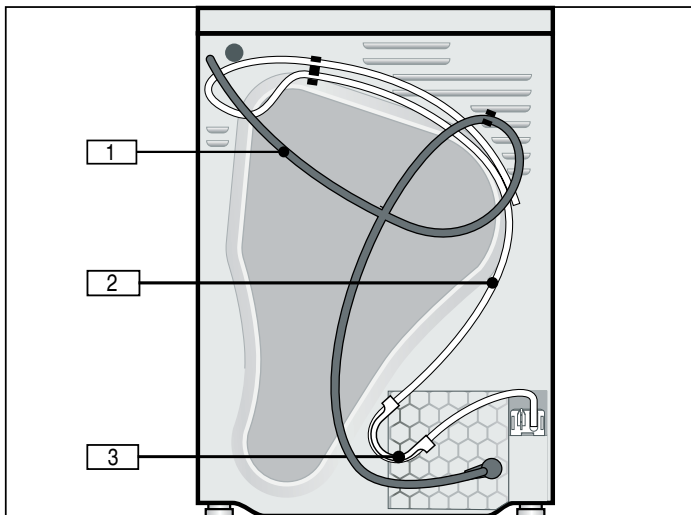
▲ WARNING

TO AVOID RISK OF INJURY OR DEATH, DO THE FOLLOWING

- After unplugging the old appliance, remove the electric power cord and dispose of properly.
- Remove the door or permanently disable the door lock to prevent children from being locked inside.

Parts provided with your dryer

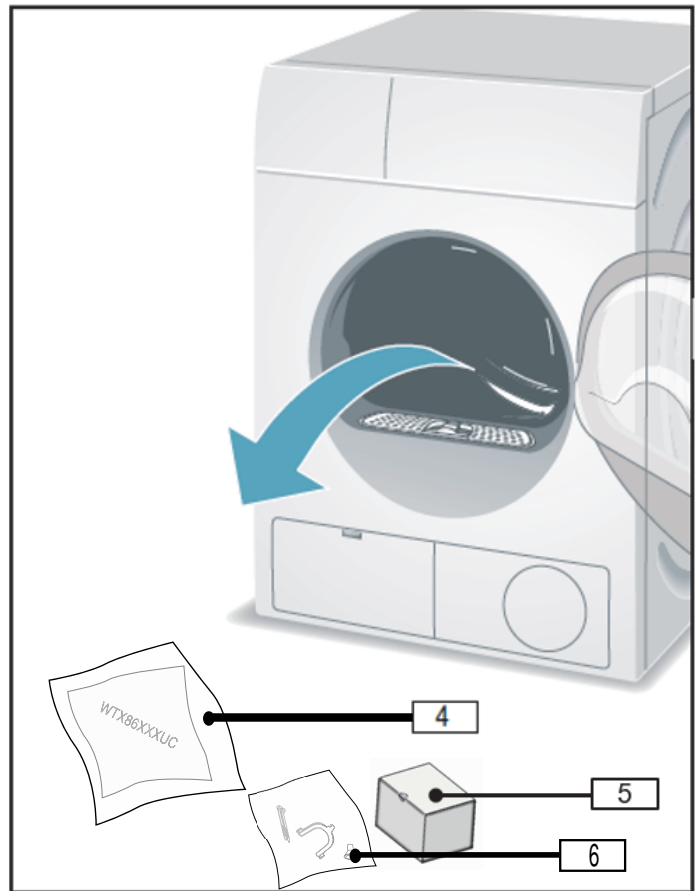
Back side of the dryer



- 1 Power cord with plug
- 2 Drain hose connected to the dryer
- 3 Elbow to form the hose to fit the drain

Dryer drum contents

A literature pack is shipped in the dryer drum. Be sure to remove this item before using the dryer.



- 4 User Manual and Product Registration
- 5 Power Adapter:
 - Supplied Power Adapter
 - 2 spare fuses
 - Instruction sheet
- 6 Drain Set Pack:
 - (2) plastic ties for securing drain hose
 - Plastic elbow
 - Plastic connector for alternate drain connections (see hose installation instructions).
 - Summary of drain hose installation instructions

▲ WARNING

RISK OF FIRE, ELECTRIC SHOCK OR INJURY TO PERSONS

- The supplied Power Adapter is intended to be used only for powering the Bosch Washers and Dryers having NEMA 6-15P cords. This Power Adapter is unique as it allows for both the Dryer and Washer to plug into the home's existing 4-prong dryer receptacle. If the home has an existing 3-prong dryer receptacle it and its complete branch circuit must be changed to a 4-prong circuit.
 - Use only Bosch replacement fuses in the Power Adapter (Customer Service part number 10013781).
 - If any parts are missing please notify your dealer immediately.
-

Tip: For correct adapter installation see → *Electrical Connections; Page 16*

Accessories for your appliance

Drying rack

A drying rack placed inside the dryer for drying wool items, shoes, etc. is available.

Drying rack item number: **WMZ20600**

Pedestal

The dryer can be mounted on a Bosch pedestal, noted below, for easier loading and unloading (see washing machine user manual for unique pedestal model number for the washer).

Pedestal item number: **WMZ20500 or replacement WTZPW20D**

Stacking kits

The dryer can be stacked on a Bosch washer of the same dimensions to save space. Only the below Stacking kits must be used when stacking this dryer on a Bosch washer.

Stacking kit without a shelf: **WTZ20410UC**

Stacking kit with a shelf: **WTZ11400UC**

Stacking kit brackets: **WTZSB30UC**

Power Adapter

The Power Adapter is for plugging into home's existing 4-prong receptacle and has two power outlets, one each for your current Bosch Dryer and Washer to plug into.

Power Adapter item number: **WTZPA20UC**

Tip: Your Bosch dryer comes with the Power Adapter included in the drum. The accessory number is given here only if it is lost or damaged and a replacement is needed.

Accessories can be purchased from Customer Service or your local dealer.

→ *Customer service; Page 4*

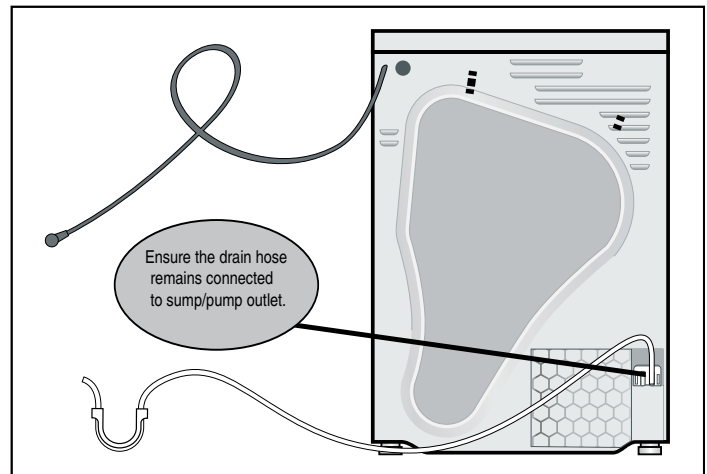
Installation - step by step and check list

Review the following list and check off each step as it is completed during installation, if necessary.

1. Unpack the dryer.
 2. Remove all objects from the dryer drum.
 3. Check the dryer for visible damage.
 4. Position the dryer near the installation location.
 5. Disconnect the power cord and drain hose from their clips on the back of the dryer.
-

▲ CAUTION

Do not disconnect the drain hose from the sump/pump connection at the bottom of the dryer.



NOTICE: Do not reuse an old or different drain hose. Only use the drain hose included with the dryer.

6. Connect the outlet end of the drain hose to a standpipe or other drain inlet. Examples are shown below.
-

▲ CAUTION

APPLIANCE DAMAGE COULD OCCUR IF DRAIN WATER FLOWS BACK INTO THE APPLIANCE

In all drain conditions, scenarios, or connections you must ensure:

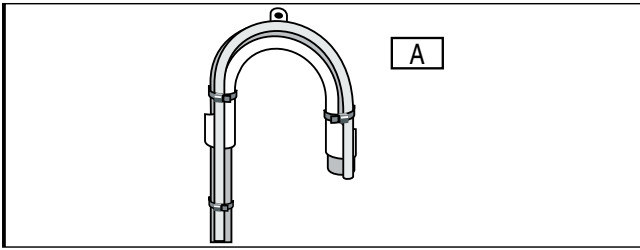
- The drain water from the hose is free flowing and not obstructed allowing adequate water flow.
 - Drain opening must not be sealed in any way. It must be open to avoid a back siphon condition.
 - The end of the drain hose does not protrude into the pumped out or standing water.
 - Be sure to follow all local codes and regulations in draining the condensate water to a suitable drain.
-

Examples of connections:

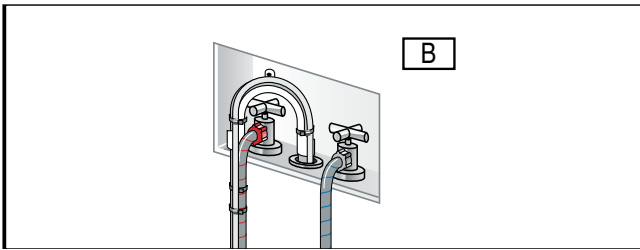
- Plumbing box or Standpipe connection:
For most plumbing box installations (with adjacent washer) the plastic elbow supplied with the dryer will not be used and must be removed from the dryer drain hose.
1. Fasten the dryer drain hose to the washer drain/elbow as shown in picture "A". Secure with plastic ties supplied.

⚠ CAUTION

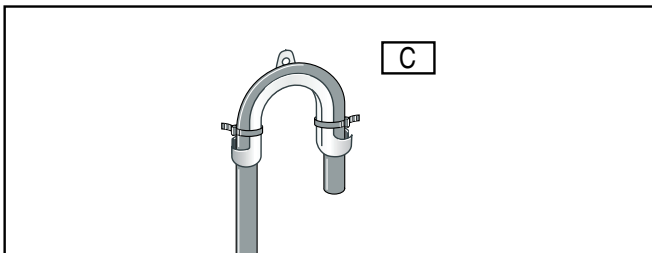
Do not over tighten plastic ties pinching or causing a restriction in the drain hose.



2. Place drain hose assembly into standpipe as shown in picture "B".

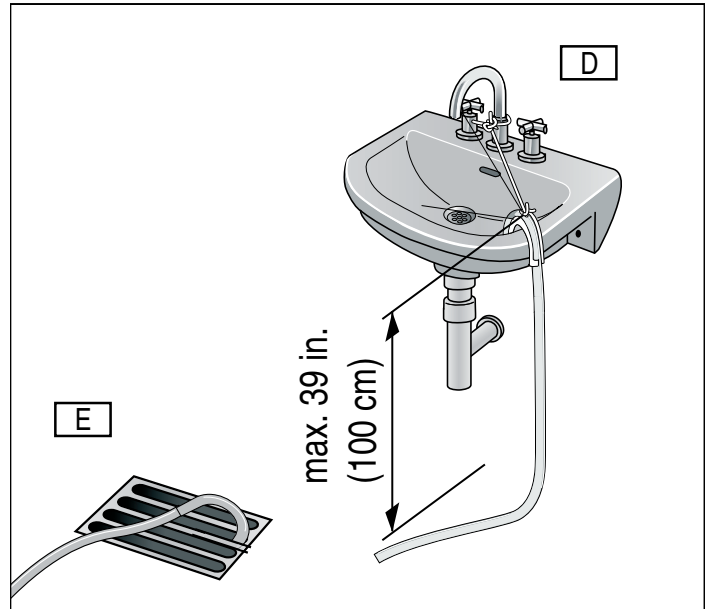


- Sink/Basin or Floor drain:
If using the elbow supplied on the hose re-position elbow closer to the drain end of hose and fasten with the plastic ties as shown in picture "C".



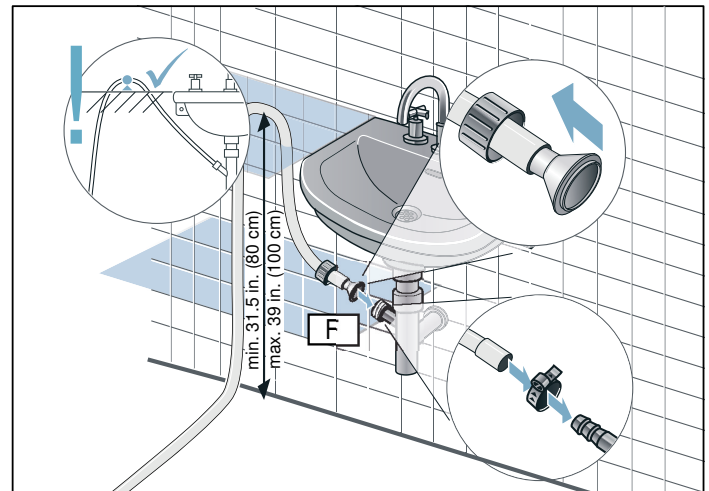
Secure hose and/or elbow as shown below. Sink "D" or floor "E".

NOTICE: Examples shown are for reference only. Not all fittings, connectors, nuts, brackets, ties, etc. are supplied to accommodate every application.



Maximum height of drain is 39 in. (100 cm).

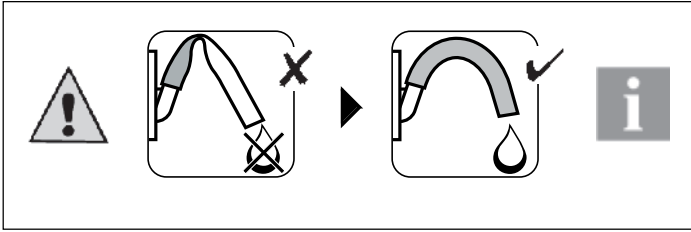
- Sink Drain Pipe:
Attach and secure drain hose as shown below in picture "F".
Use a standard hose clamp which can be purchased from your local hardware store.



Minimum height of drain for installation shown above is 31.5 in. (80 cm). Maximum height of drain is 39 in. (100 cm).

NOTICES

- Examples shown are for reference only. Not all fittings, connectors, nuts, brackets, ties, etc. are supplied to accommodate every application.
- Ensure there are no kinks or crimps along the entire length of hose.



- If installed in an upper floor of a multi-story building, the dryer should be installed on a drained floor to prevent water damage to lower floors in the event of a leak.

Electrical Connections

Power Cord

The attached power cord is a standard NEMA 6-15P cord and is UL approved and listed in the USA and Canada. It meets the following requirements:

- 208-240 volt rated;
- 15 amps.

NOTICES

- This appliance is restricted to being powered by the supplied power cord noted above.
 - There are two allowable methods to connect the appliance cord to power:
1. If the home has an existing 4-prong, 30A Dryer receptacle use the supplied Power Adapter. Plug the adapter into the 4-prong receptacle (Line side) and then plug the Bosch Dryer and Washer power cords into the adapter (Load side). See following images of Power Adapter for Line/Load side locations and appliance cord placement.

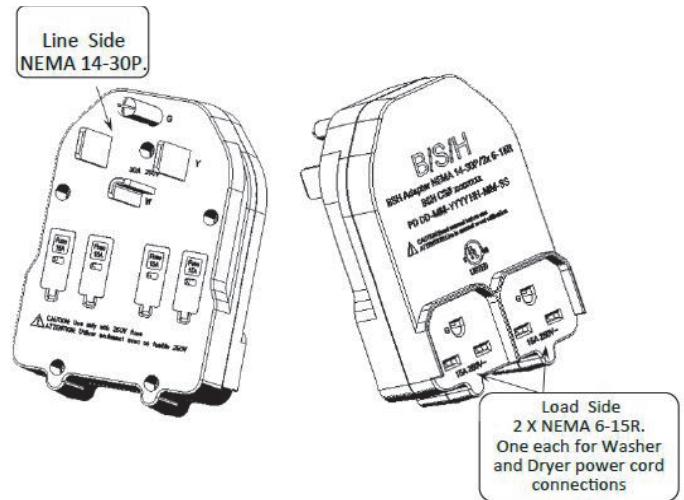
NOTICE:

This adapter can only be used with a 4-prong receptacle. If the home has an existing 3-prong dryer receptacle it and its complete branch circuit must be changed to a 4-prong circuit.

2. Use an existing individual 240V, 15A minimum branch circuit having a NEMA 6-15R outlet (or choose to have one installed).

WARNING

TO REDUCE RISK OF FIRE OR ELECTRIC SHOCK. Do not reuse this Power Adapter with a new purchase of a Dryer. The old Power Adapter must be discarded with the old Dryer. A new Power Adapter must be used when a new Dryer is installed.



ALL ELECTRICAL CONNECTIONS AND CIRCUITS

▲ WARNING

ELECTRIC SHOCK HAZARD

- Do not pull on the power cord to unplug the dryer.
 - Protect the power cord from physical damage such as being twisted, kinked, pinched, or walked on.
 - DO NOT use an extension cord to connect the dryer to the power supply.
 - Make sure:
 - The power cord fits into the outlet/receptacle.
 - The home's internal power supply circuit wire size is sufficient and electrically grounded.
 - Do not cut, remove or bypass the grounding prong on the power cord end.
 - Do not modify the plug provided with the appliance; if it will not fit the outlet, have a proper outlet installed by a qualified electrician.
 - The power cord must only be replaced by a qualified service provider or licensed electrician to help avoid a fire/electric shock hazard.
Use only manufacturer recommended replacement power cords purchased through our Customer Service department.
 - Do not use NEMA 14-30P (4-prong) nor 10-30P (3-prong) power cords on this appliance.
 - Do not reuse old power cord.
 - Do not make a sharp bend or crimp wiring or conductors at connections.
-

▲ WARNING

ELECTRIC SHOCK HAZARD

To reduce the risk of electrical shock:

- Only pull out the power cord by the plug end and never by the cord, as this could damage it.
 - Never touch or hold the plug end or power cord with wet hands.
 - Never unplug the plug end during operation.
-

▲ WARNING

ELECTRIC SHOCK HAZARD

Improper connection of the equipment-grounding conductor can result in a risk of electric shock. Check with a qualified electrician or servicer if you are in doubt as to whether the appliance has been properly grounded.

GROUNDING INSTRUCTIONS


▲ WARNING

ELECTRIC SHOCK HAZARD

This appliance must be electrically grounded. In the event of malfunction or breakdown, grounding will reduce the risk of electric shock by providing a path of least resistance for electric current.

This appliance is equipped with a cord that has an equipment grounding conductor and a grounding plug.

The plug must be plugged into an appropriate outlet that is properly installed and grounded in accordance with all local codes and ordinances.

If a ground fault circuit breaker is used, ensure it has this symbol: .

Only this symbol can assure compliance with all current regulations.

SAVE THESE INSTRUCTIONS!

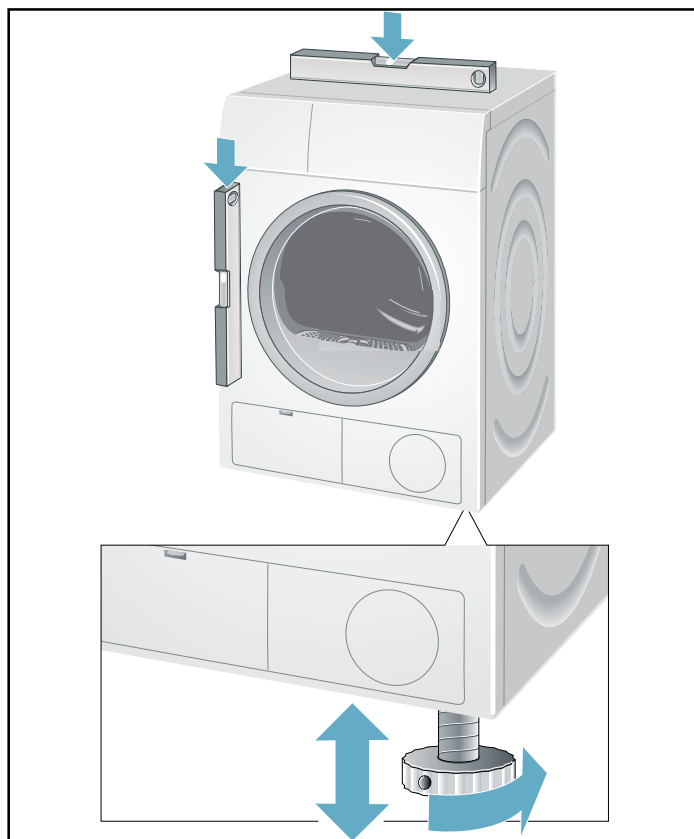
Leveling the dryer

Importance of leveling the dryer

It is important that your dryer is level and that all four dryer feet press with equal pressure against the floor. This will help assure the quietest, most vibration-free use of your dryer.

To adjust the dryer feet:

1. Install the dryer on a level and solid surface, preferably in a corner of a room.
2. If the floor is uneven (or not level) adjust the dryer feet as required to level the dryer. Do not place anything under the dryer feet to help level the dryer.
3. Extend the dryer feet no more than is necessary. The more the feet are extended, the more vibration the dryer will experience. Start with the dryer feet turned all the way in and adjust each foot as necessary.
4. Use a bubble level to check the top of the dryer to make sure it is level side to side and front to rear.
5. Press down on each corner of the dryer top to make sure the dryer does not "wobble". There should be no "give" or movement. All four dryer feet should press equally against the floor. This is just as important as the dryer being level to prevent vibration.



Check heating system

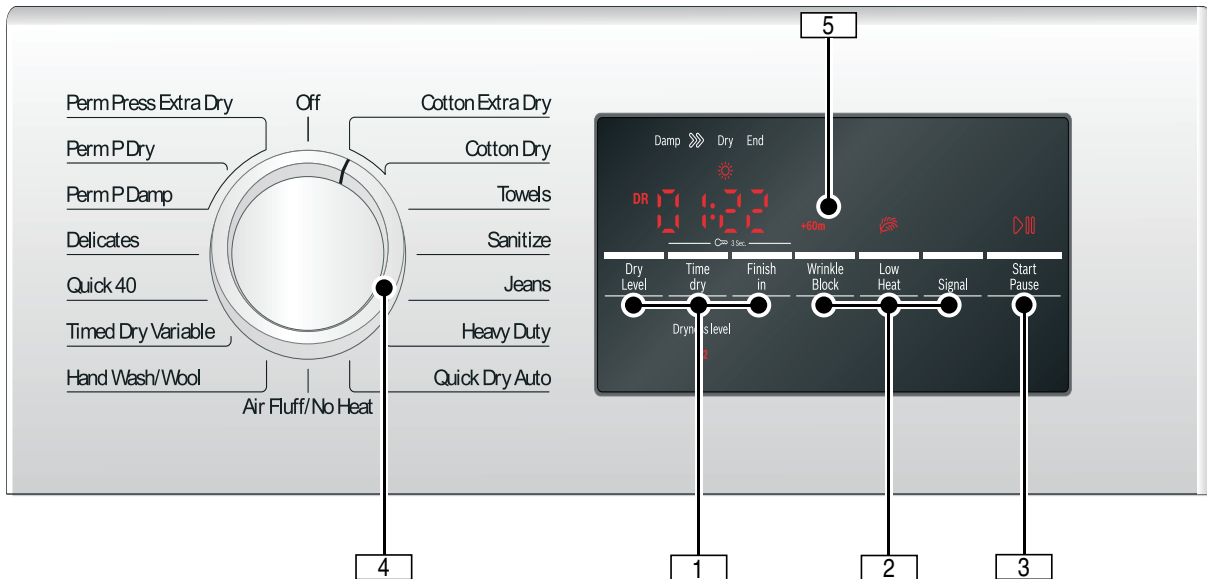
1. Check that the drum is empty.
2. Close the dryer door.
3. Switch the dryer to **Timed Dry Variable** program and then touch the **Start/Pause** button.
4. After 5-6 minutes touch the **Start/Pause** button and open the door.
 - If the interior of the dryer feels warm, the dryer has been connected properly. Switch the dryer to **Off**.
 - If the dryer does not work, switch the dryer to **Off**. Look in the Troubleshooting section of this user manual for hints in solving the problem.

Preparing to transport the dryer - step by step

1. Rotate the program selector to **Off**.
2. Pull out power supply plug.
3. Place any accessories in the drum.
4. Close the door and secure with adhesive tape.
5. Screw the height-adjustable feet of the dryer into the housing to prevent them from being damaged during transportation.

Getting to know your appliance

Control panel



1 Dry Level, Time Dry, Finish in

Selectable Option Settings for customizing Programs as desired.

Indicator Symbol lights or desired time is displayed if setting is active. → *Default Program and Option settings; Page 29*

4 Program Selector

Selecting a program and switching on/off; turns in both directions.

2 Wrinkle Block, Low Heat, Signal

Additional option settings.

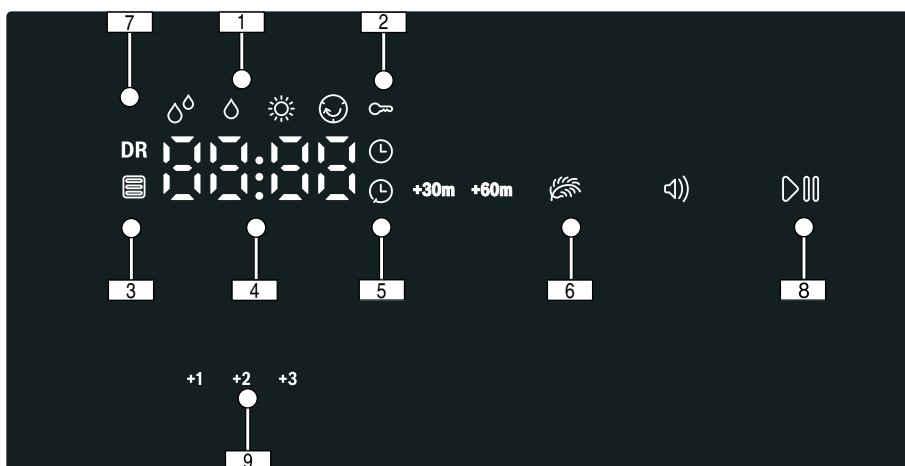
Indicator Symbol lights if setting is active. → *Additional Program Option settings; Page 29*

5 Display area for settings and information.

3 Start/Pause

- starts or pauses the selected cycle;
- indicator lamp on (steady) - cycle running, can be paused;
- indicator lamp blinking - options can be changed; cycle can be started; door is closed; cycle is in Pause mode.

Display area



1 Drying cycle status sequence

2 Childproof lock indicator

3 Cleaning required indicator

4 4 Digit Display:

- Finish in time adjustable in 1h (h=hour) steps to 24h
- program duration 2:30

5 Time Dry ☰ and Finish in ⏸ indicators

6 Indicator lamps for additional option settings: Wrinkle Block, Low Heat and Signal

7 Check drain indicator

8 Start/Pause indicator

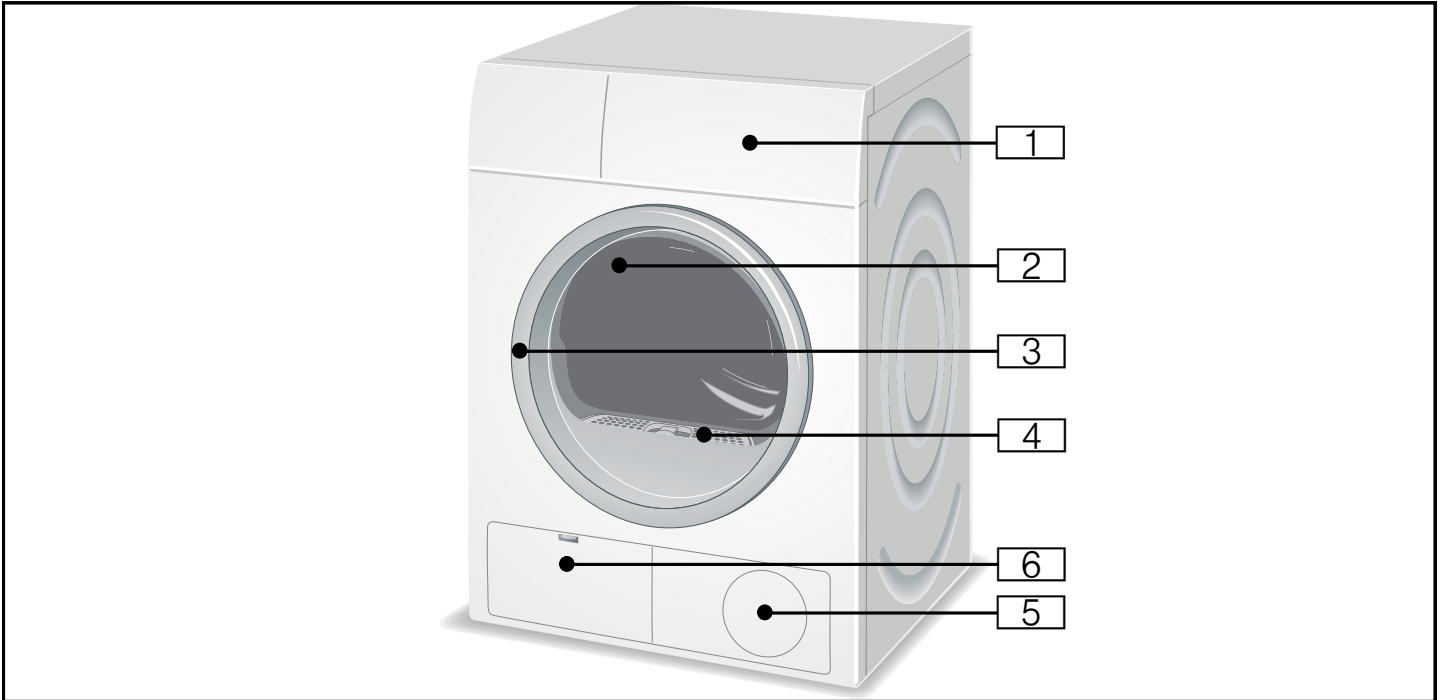
9 Dry Level indicator

OPERATING INSTRUCTIONS

▲ WARNING

RISK OF FIRE, ELECTRIC SHOCK, OR INJURY
To reduce the risk of fire, electric shock, or injury to persons, read the IMPORTANT SAFETY INSTRUCTIONS and OPERATING INSTRUCTIONS before operating this appliance.

Your new dryer



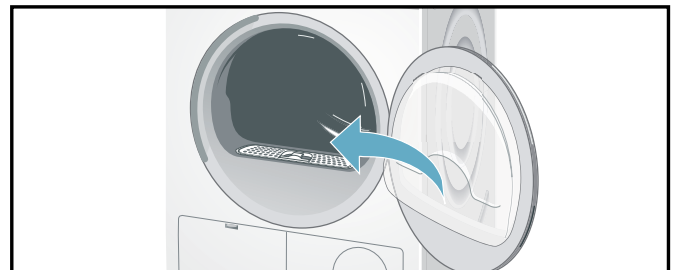
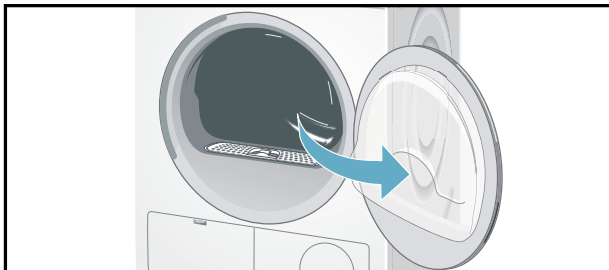
1 Control panel, display area, program selector

2 Drum with interior light (depending on model)

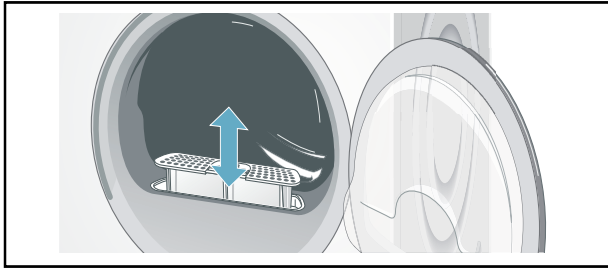
The interior light activates after the door is opened and after the program starts, it switches off automatically.

3 Open the door

Close the door

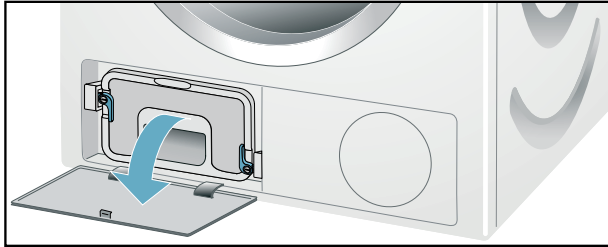


4 Lint filter

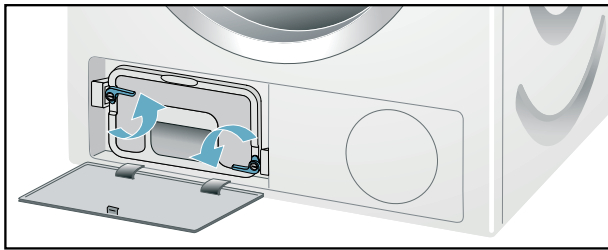


5 Air inlet

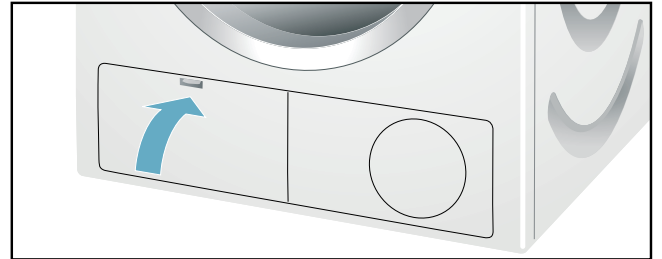
6 Open the maintenance flap



Condenser



Close the maintenance flap



▲ WARNING

BEFORE USING YOUR DRYER

Read and follow all installation and operating instructions.

Check the machine. Never connect the utilities (power or water) to or start a damaged machine! Contact Customer Service!

→ *Customer service; Page 4*

Check to be sure the dryer drain hose is installed properly.

Turning the dryer on and off

The rotating Program Selector turns the dryer on as drying cycle is selected and off when the selector is later turned to the vertical **Off** position.

Before using the dryer for the first time

1. Read these operating instructions carefully.
2. Check that the supply voltage corresponds with the voltage specifications on the rating plate on the dryer, see top rear side of the dryer and/or rating plate label inside the dryer door.
→ *Electrical Connections; Page 16*
3. Remove all objects from the drum.

4. Check the dryer for visible damage. If damage found contact your dealer.
5. Wipe the inside of the drum with a damp cloth.
6. Check heating system.
→ *Check heating system; Page 18*
7. If the dryer does not work, switch the dryer to **Off**. Look in the Troubleshooting section of the operating instructions for support.
→ *Troubleshooting; Page 34*

Temporary disconnection of the dryer

If you intend to go on vacation or are not using your dryer for an extended period of time, you should:

1. Turn off the circuit breaker.
2. Pull out the power supply plug if possible.
3. Clean the lint filter.

Using program selector to choose a drying cycle

NOTICE: If the Child lock is activated, you must deactivate it before you can select a program.
→ *Childproof lock; Page 25*

Use the program selector to select the desired drying program. The dial turns in both directions and when a cycle is selected its time duration appears in the display.

Program selection

For optimum drying results your dryer offers several different types of programs to choose from.

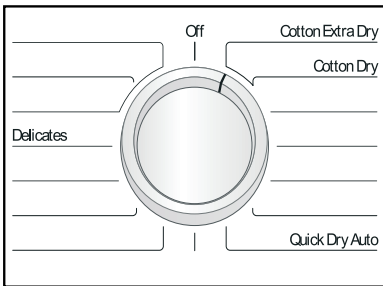
Select the required drying program from the program table according to the examples. → *Program selection table; Page 28*

Automatic programs

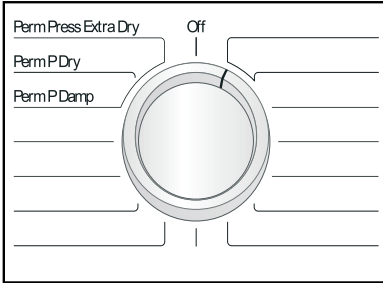
There are automatic programs for different types of textiles (regular/cotton, permanent press).

The program sequence of automatic programs is controlled by sensors. The duration of the program depends on the measured degree of moisture in the laundry and on the selected degree of dryness (e.g. Cotton Dry or Cotton Extra Dry).

- Regular/Cotton



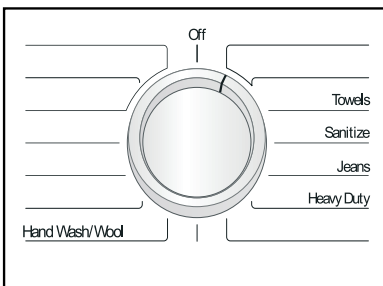
- Permanent Press



Special programs

The programs Sanitize, Jeans, Towels, Hand Wash/Wool and Heavy Duty (depending on model) are made for special type fabric loads.

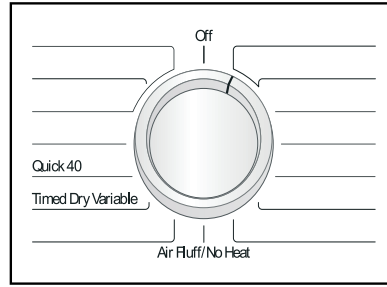
→ *Program selection table; Page 28*



Time programs

Time programs run at specific temperatures and are suitable for delicate items, individual or a few small items and for adding additional drying time if necessary.

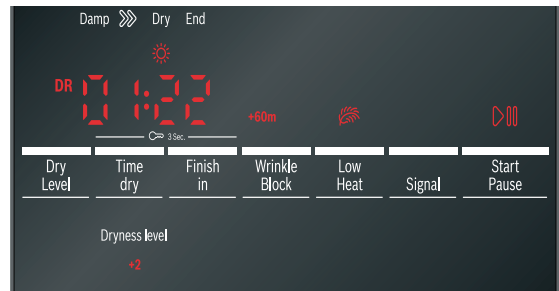
→ *Default Program and Option settings; Page 29*



Selecting program settings and additional options

By selecting program settings and additional options, you can adjust the drying process to better suit the items you are drying.

The settings can be selected and deselected depending on the cycle progress.



The indicator lamps of the buttons light up if the setting is active.

For **Time Dry**, **Finish in**, **Wrinkle Block**, **Low Heat** and **Signal** the settings are not retained after the appliance is switched off.

→ *Default Program and Option settings; Page 29*

→ *Additional Program Option settings; Page 29*

For **Dry Level** the setting is retained after the appliance is switched off.

→ *Dry Level; Page 29*

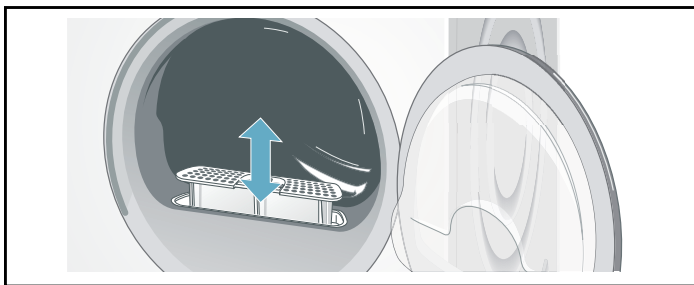
Loading the laundry

▲ WARNING

RISK OF EXPLOSION

Do not dry laundry that has ever been in contact with solvents, oil, wax, grease or paint (e.g. nail varnish remover, stain remover, cleaning solvent, etc.).

1. Check lint filter.



The filter should be cleaned after or before every drying process. Cleaning the filter reduces the drying time and saves energy.

→ *Cleaning the lint filter; Page 30*

2. Load the laundry into the drum and close the door.

Tip: If the door has not been closed properly, the dryer will not start.



Tips

After loading, close the door carefully so as not to trap any items between the door and the rubber seal. The door should close until a click is heard.

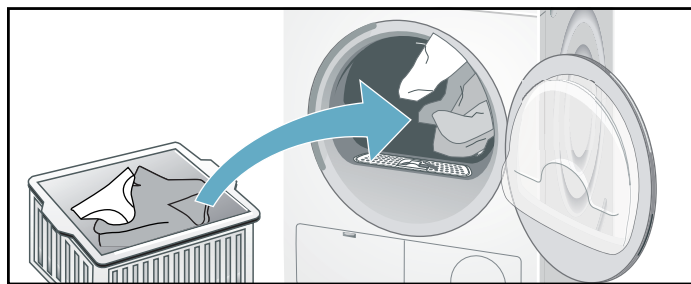
Foreign objects left in the drum may damage laundry. Before inserting any laundry, check to make sure no foreign objects are in the drum.

Recommended Load Size

Recommended maximum load size can be found in the program selection table in this manual.

→ *Program selection table; Page 28*

Load the laundry



Place laundry in the empty drum. Put each piece of laundry into machine separately.

For best results the laundry should be sorted according to type of laundry and desired degree of drying.

→ *Sorting the laundry; Page 27*

→ *Program selection table; Page 28*

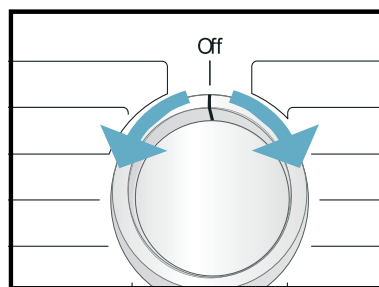
→ *Dry Level; Page 29*

Starting the program

1. Rotate program selector to the desired program.

Select the program which corresponds to the laundry in the dryer from Program selection table.

→ *Program selection table; Page 28*




The **Start/Pause** indicator light starts flashing.

2. Touch the **Start/Pause** button. Indicator lamp lights up and the cycle starts.



During the cycle, the display area indicates the estimated remaining time and symbols showing the cycle progress are lit. → *Display area; Page 20*

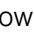
NOTICES

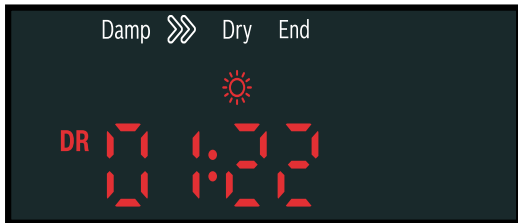
- If you want to protect the cycle against inadvertent adjustment, select the **Childproof lock**.
→ *Childproof lock; Page 25*
- If  indicator lights up, clean the lint filter and/or Condenser.
→ *Cleaning the lint filter; Page 30*
→ *Cleaning the Condenser; Page 32*
- If **DR** indicator lights up, check the drain hose and its connection.
→ *Cleaning the Condenser; Page 32*

3. If required, select **Low Heat** by pressing the button.
→ *Additional Program Option settings; Page 29*
4. If required, select **Wrinkle Block** by pressing the button.
→ *Additional Program Option settings; Page 29*

Tip: The estimated remaining time will be updated.

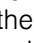
Indicator of program sequence

Bosch dryers use an advanced control system which continually monitors the laundry's remaining moisture. The current state of the process and status of the program is shown by indicator lights (Damp, , Dry, End).



Childproof lock

You can secure the dryer against inadvertent changing of the set functions. To do this, activate the childproof lock after cycle start.

To **Activate/Deactivate**, touch Time dry and Finish in buttons at the same time for 3 seconds. In the display field, you will see the  symbol light indicating the childproof lock is active.

NOTICE: The childproof lock will remain activated until the next cycle start even after switching the machine off. You must deactivate the childproof lock before the next cycle and, if necessary, activate it again after starting the cycle.

Selecting a different program

If you have inadvertently started the wrong program, you can change this as follows:

1. Touch **Start/Pause**.
2. Select another program.
3. Touch **Start/Pause**. The new drying cycle starts from the beginning.

Cancel program

If required, you can cancel the selected program:

1. Touch **Start/Pause**.
2. Rotate the program selector to **Off**.

Program end



End appears in the display area and the Start/Pause button indicator lamp is off.

After the program end, rotate the program selector to **Off**.

Removing laundry/switching the appliance off

1. Open the door and remove the laundry.
2. Turn the program selector to the **Off** position.
Appliance is switched off and dryer light goes out.
3. Clean lint filter.
→ *Cleaning the lint filter; Page 30*
4. Close the door.

Tip: If the display panel switches off and the Start/Pause button indicator is blinking at the end of a program, the Energy-saving mode is active. To activate the display, press any button.

→ *Environmentally friendly use of your dryer; Page 8*

Signal

For switching the buzzer on and off touch the **Signal** button.

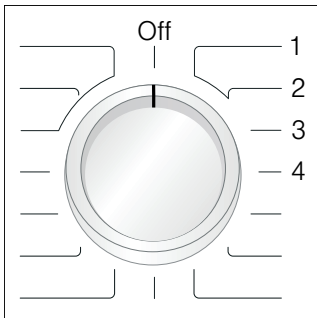
The buzzer indicates program end if it is activated.
Other alarms are not influenced by this option.

You can also change the following settings:

- volume for buzzer
- volume for button signals

To change these settings always activate adjustment mode first.

Activate adjustment mode



1. Select **Cotton Extra Dry** on position 1.
The appliance is on.
2. Hold down **Start/Pause** and turn the program selector to the right (position 3). Release **Start/Pause** button.
Adjustment mode is now activated and the default volume for buzzer appears in the display.

Changing the volume

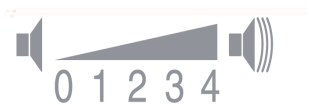
You can set the volume by touching the **Time dry** (volume down) or **Finish in** (volume up) button with the program selector in the following positions:

- Position 3 for buzzer volume



0 = off, 1 = soft, 2 = mid, 3 = loud, 4 = very loud

- Position 4 for button signals volume



0 = off, 1 = soft, 2 = mid, 3 = loud, 4 = very loud

Quit adjustment mode

Turn the program selector to **Off** position. The settings were saved.

Laundry

Preparing the laundry

NOTICE: Damage to the appliance/fabrics.

Foreign objects (e.g. coins, paper-clips, needles, nails) may damage the laundry or components in the dryer.

Therefore, note the following tips when preparing your laundry:

- Empty all pockets to ensure no loose debris (coins, keys, other hard objects and cigarette lighters) are placed in the dryer drum.
- Close any fasteners (such as zippers, hooks and eyelets) that could cause laundry to catch or become entangled. Button up covers. Tie cloth belts, apron strings, etc. together or use a laundry bag.
- Remove any foreign objects or non-washable parts.
- The drum must be empty prior to loading textiles.

Sorting the laundry

Check the care labels on each laundry item prior to drying. They provide valuable information as well as limitations about laundry process (temperature etc.) to help you choose an appropriate cycle.

Do not dry the following textiles in the dryer:

- air-tight textiles (e.g. rubberized),
- delicate fabrics (silk, synthetic curtains).

Drying tips

- To ensure a uniform drying result, sort the laundry according to fabric type and drying program.
- Always dry very small items (such as socks and handkerchiefs) and underwired bras together with large items of laundry or in a laundry bag.
- Do not over-dry easy-care laundry - risk of wrinkling! Allow laundry to finish drying in the air.
- Do not iron laundry immediately after drying. Place the laundry in a pile for a short while. Residual moisture will then be distributed uniformly.
- Knitted fabrics (e.g. T-shirts, jerseys) often shrink when tumble-dried for the first time. Do not use the **Extra Dry** program.
- Only dry wool fabrics with the use of drying rack accessory. To refresh or fluff up wool articles use the **Hand Wash/Wool** program and remove load from dryer and layout on flat surface to finish drying.
- For pre-dried, multi-layered fabrics or small, individual items of laundry, use the **Time** program. Also suitable for adding additional drying time if necessary.
→ *Program selection; Page 23*
→ *Program selection table; Page 28*
- Some detergents and textile care products, starch or softeners may contain chemicals that may become deposited on the moisture sensors negatively affecting their function and the drying results.
 - When washing laundry to be tumble-dried, use the correct amount of detergent and textile care products as specified in the manufacturer's instructions.
 - Clean the moisture sensor regularly.
→ *Cleaning the moisture sensors; Page 33*

Program selection table

Programs	Max. load up to:	Type of laundry
Standard programs		
Cotton Dry	full load	Normal cotton and linen type load (bed linen, cotton clothes, etc.)
Cotton Extra Dry	full load	Terry bathrobes and terry bed linen (particularly thick or multi-ply)
Perm P Damp	1/2 load	Trousers, dresses, skirts, shirts, blouses, leggings, sports clothing with synthetic-rich fibers, lingerie (not to be or only lightly ironed)
Perm P Dry	1/2 load	Shirts, blouses, sports clothing (not to be ironed)
Perm Press Extra Dry	1/2 load	Bed linen and table linen, track suits, parkas, blankets (not to be ironed, thick or multi-ply)
Delicates	1/4 load	Lingerie made of synthetic fibers, cotton or blended fabric
Quick 40™	1/3 load	Multi-layered fabrics. Sensitive fabrics made of synthetic or acrylic fibers. Also for adding additional drying time if necessary
Timed Dry Variable	1/3 load	Multi-layered fabrics. Sensitive fabrics made of synthetic or acrylic fibers. Also for adding additional drying time if necessary.
Hand Wash/Wool	1/3 load	Wool fabrics suitable for washing or delicate hand washed items. Use to freshen or fluff up wool articles. Remove items after program end and spread out on flat surface to finish drying. Use of Drying rack is recommended → <i>Drying rack; Page 14</i>
Air Fluff/No Heat	1/3 load	All types of fabrics. For freshening up or airing out of garments that have been worn for a short period of time.
Quick Dry Auto	1/4 load	Laundry made of synthetic fibers, cotton or blended fabrics (for example) that needs to be dried quickly
Special programs		
Towels	1/3 load	Mix of cotton and synthetic textiles that do not require sensitive temperatures and treatments.
Sanitize	1/2 load	Cotton fabrics for drying at high temperatures.
Jeans	1/2 load	Fabrics made from jeans/denim.
Heavy Duty	full load	Terry towels, kitchen towels, hand towels, bed linen, underwear, cotton socks

Tip: For best results it is recommended to load the amount of textiles into the drum according to the fabric type and amount shown in the above table.

Default Program and Option settings

At the factory initial settings are pre-set for all cycles. You can change some program settings as follows.

Dry Level

This option adjusts the drying time in small steps for certain programs.

Default setting = OFF (no LED Symbol shown)

Selectable values: OFF, +1, +2, +3

The **Dry Level** is retained until changed.

NOTICE: The higher the number value the increased time of drying.

Time Dry

Available only for Time programs,

→ *Program selection table; Page 28*

can be selected from minimum 20 minutes to maximum 3 hours, in 10-minute steps.

Additional Program Option settings

Wrinkle Block

If the **Wrinkle Block** option is activated it prevents the laundry from creasing or wrinkling. The drum rotates at specific intervals after the drying process allowing the load to remain loose and fluffy until removed.

If the **Wrinkle Block** button is touched, this function is set to 60 (+60m) or 90 (+90m) minutes.

Finish in

The program end (Finish in) time can be set in one hour increments to a maximum of 24 h (hours).

After selecting the desired drying program (at the dial) but before touching the Start button, touch the **Finish in** button until the desired time is displayed, e.g. 8 h, then touch the Start button to start the dryer.

NOTICE: The cycle duration is included in the set Finish in time.

Here is an example of 1hr:30min cycle time and an 8 h Finish in time. 8 h is displayed (until Energy-saving mode activates) and counts down (approximately 6hr:30min) until the drying cycle begins (at 1hr:30min) then the cycle duration 1:30 is displayed and drying begins. Total time approximately 8 hours.

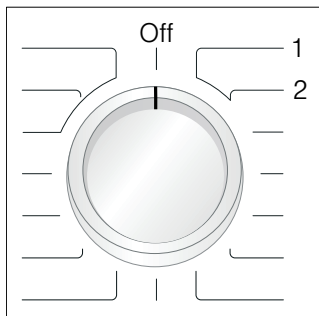
Spin speed

The **Spin Speed** setting is based on your washer's normal spin speed. Adjusting this setting allows the dryer's displayed time to be as close as possible to the actual drying time.

NOTICE: The spin speed is not the same as the rotation speed of the dryer drum.

To change the dryer's **Spin Speed** setting follow the instructions below.

Activate adjustment mode



The laundry remains loose and fluffy until it is removed. The laundry should be removed before this time has elapsed.

Low Heat

Reduced temperature for delicate fabrics, e.g. polyacrylic, polyamide or elastane, with longer drying

1. Select **Cotton Extra Dry** on position 1.

The appliance is on.

2. Touch and hold **Start/Pause** and turn the program selector to the right (position 2). Release **Start/Pause** button.

Adjustment mode is now activated and the default value (1000 rpm) appears in the display.

Change spin speed

Press the **Time dry** or **Finish in** button to change the setting (allowable values are between 600 and 1800 in increments of 100).

Quit adjustment mode

Turn the program selector to **Off** position. The settings were saved.

USER-MAINTENANCE INSTRUCTIONS

USER-MAINTENANCE INSTRUCTIONS

Your appliance is designed to give you years of service. Observe the following instructions to maintain your appliance and keep it in top operating condition.

▲ WARNING

RISK OF EXPLOSION

Never use solvents or highly flammable liquids for cleaning.

▲ CAUTION

Regular Maintenance, especially cleaning the lint filters is important!

Improper cleaning may damage the dryer or cause injury.

Do not spray with a hose or pressure washer.

Do not use scouring agents or all-purpose cleaners.

Do not use steam cleaners.

Do not use bleach-based wipes.

Cleaning the Dryer's exterior

Clean the Dryer's exterior surfaces by wiping with a soft cloth and soapy water only.

Wipe the drum, door seal and inside of the door with a damp cloth only.

NOTICE: Do not clean with a water jet.

Remove detergent and cleaning agent residue immediately.

During drying, water may occasionally accumulate between the window and the seal. This does not affect the proper operation of your dryer.

Cleaning the lint filter area

▲ WARNING

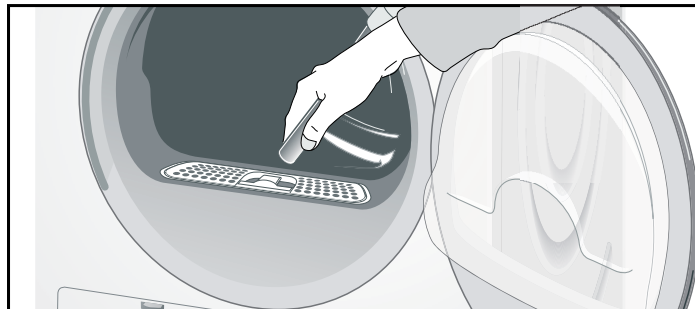
FIRE HAZARD

Follow these instructions when cleaning the lint filter area.

- DO NOT extend any cleaning device or object more than six inches (6") beyond the lint filter opening.
 - Only use a soft instrument (rubber, cloth or soft bristles) for cleaning inside the lint filter area.
 - With both lint filters removed, wipe or vacuum around the lint filter opening and no more than six inches below the opening.
-

Over time, lint from the drying process collects in the lint filter area.


This lint can be easily removed using a vacuum cleaner.



Cleaning the lint filter

Dirty filters prolong the drying time and increases energy consumption.

The filter should be cleaned before or after each drying process.

If  indicator lights up during a drying program, clean the filter immediately.

Tip: The program is interrupted automatically.

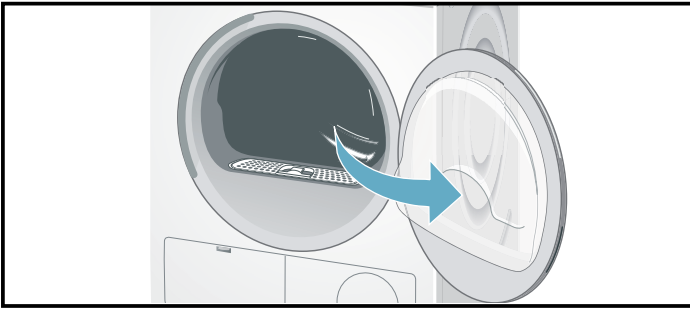
To clean the lint filter:

1. Turn the Program Selector to switch off the appliance.

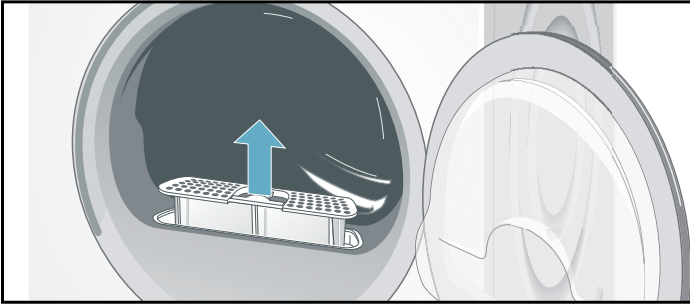
▲ CAUTION

The inside of the door heats up during the drying process. The drum, the door and the laundry may be hot.

2. Open the door.

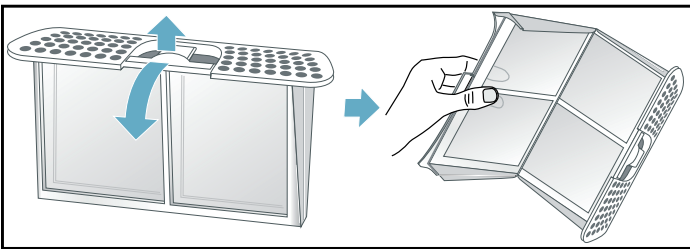


3. Pull out filter.

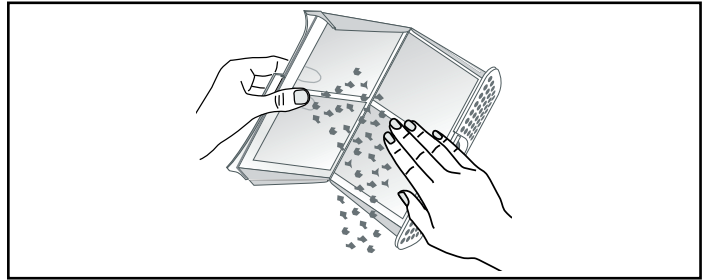


Remove the lint from the lint filter opening and area below. Ensure that no lint falls into opening below.

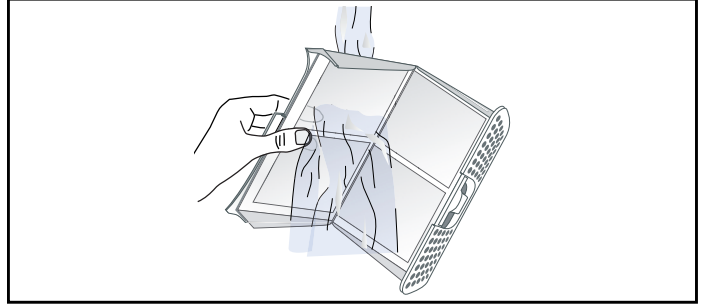
4. Open the filter.



5. Remove lint (run hand over filter).

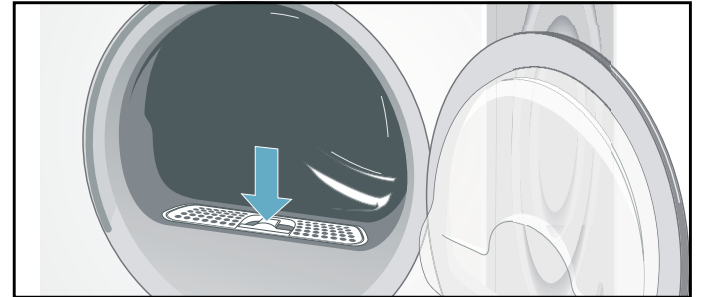


NOTICE: Severely dirty or clogged lint filter should be rinsed under warm running water.

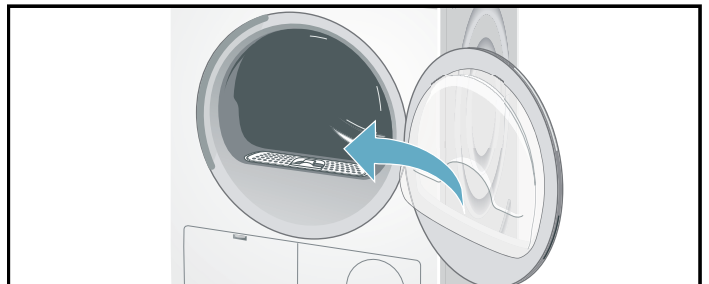


The filter must be dried thoroughly before being placed back into dryer.

6. Close the filter and re-insert it.



7. Close the door.

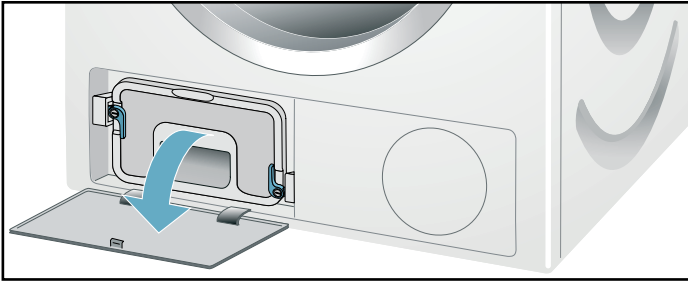


Cleaning the Condenser

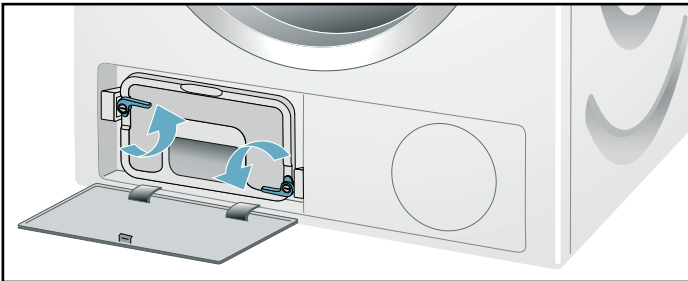
The Condenser requires periodic cleaning (recommended once per month under normal drying conditions). The frequency of cleaning depends on the amount and type loads being dried.

To clean the Condenser:

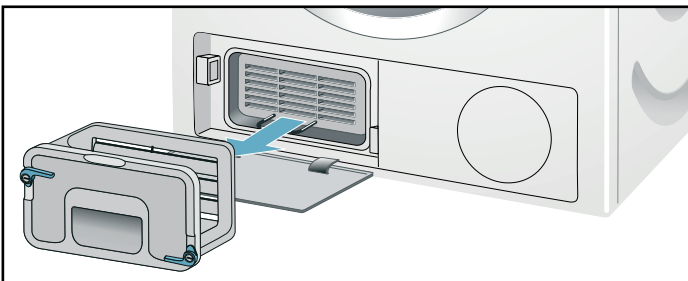
1. If the dryer is hot, run on **Air Fluff/No Heat** program to allow the dryer to cool down.
2. Residual water may escape, place an absorbent cloth under the maintenance flap.
3. Unlock the maintenance flap and open it completely.



4. Turn both locking levers towards each other.

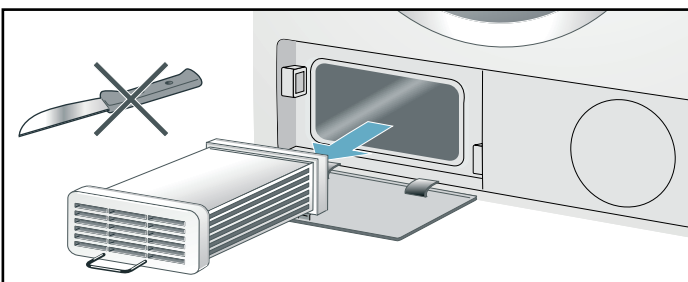


5. Pull out the Condenser cap.

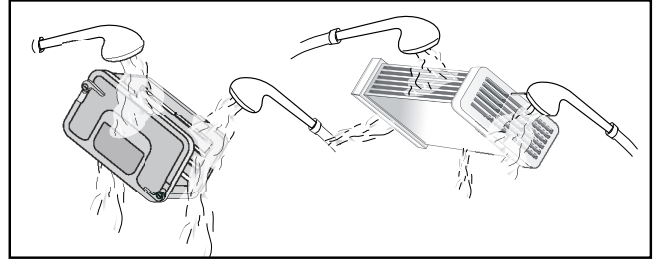


6. Remove the Condenser.

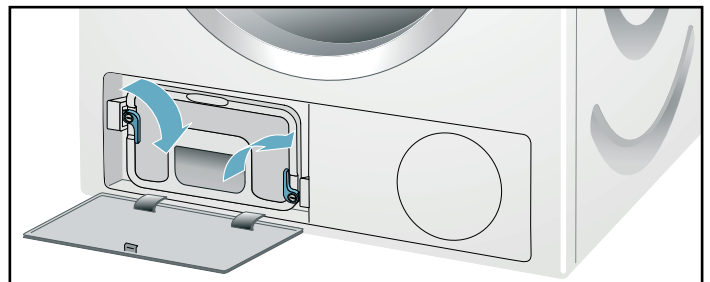
NOTICE: Do not damage the Condenser! Clean with warm water only. Do not use hard or sharp edged objects!



7. Rinse the Condenser and the cap on all sides with a jet of water to completely remove all of the lint and fluff.



8. Remove all lint and fluff from the seals on the dryer and Condenser.
9. Allow the cap and the Condenser to dry fully.
10. First insert the Condenser, then the cap.
11. Turn back both locking levers.



12. Close the maintenance flap until it locks into position.



13. Look in the Troubleshooting table to reset the maintenance indication.

→ *Troubleshooting; Page 34*

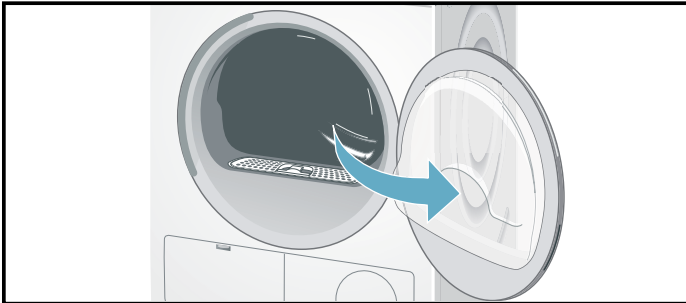
Cleaning the moisture sensors

The dryer is equipped with a stainless-steel moisture sensor. The moisture sensor measures how damp the laundry is.

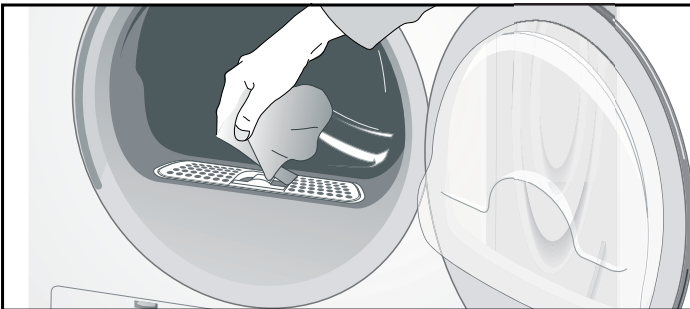
After long periods of use the moisture sensor may become covered by a fine layer of limescale or residue of detergents and textile care products. Such residue must be removed regularly as the sensor function will be impaired and the drying results less than desired.

To clean the moisture sensors:

1. Open the door.



2. The deposit on the sensors can easily be removed by wiping the sensors (the two bars next to the lint filter) with a cloth and white vinegar.



NOTICE: Use white vinegar only!
Clean the moisture sensors once a month.

Maintenance of drain hose

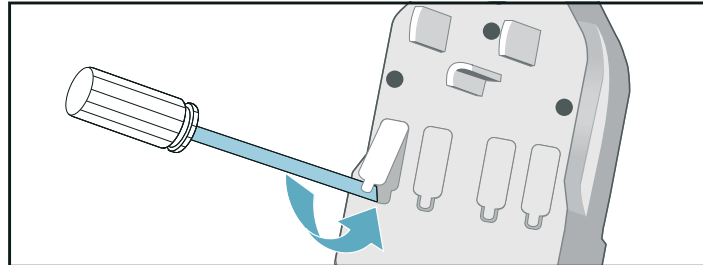
If **DR** indicator lights up check the drain hose for kinks, restrictions or blockage.

NOTICE: If **DR** indicator still lights up after the above steps are taken, you should contact Customer Service.

Replacing fuses in the Power Adapter - step-by-step

Fuses are a required safety device intended to last for the life of the product. In the unlikely event one fails follow the below steps to replace it.

1. Unplug the Washer and Dryer cords from the Power Adapter.
Unplug the Power Adapter from the wall outlet.



2. Remove fuse holder using a pointed tool as shown (e.g. pick or small screwdriver).
3. Replace suspected bad fuse with a known good one.

NOTICE: USE ONLY THE REPLACEMENT FUSE, PART NUMBER 10013781.

4. Reinstall the fuse and fuse holder in the Power Adapter ensuring it snaps into place.

Troubleshooting

Introduction

NOTICE: Before doing maintenance work or trying to fix a problem, rotate the program selector to **Off**.

If the power supply is interrupted during operation, the program will not continue when power is restored. When power is restored, confirm program and selected options are as desired and then press the Start/Pause button.

⚠ WARNING

RISK OF INJURY TO SKIN

The door, the drum and the laundry may be hot.

⚠ WARNING

RISK OF ELECTRIC SHOCK! EXPLOSION HAZARD

Repairs or replacement of parts should be carried out by authorized service providers only.

Before calling Customer Service, check whether you can rectify the problem yourself by means of the following table.

If a problem cannot be rectified or a repair is required:


1. Set program selector to **Off**.
2. Disconnect the dryer from the power outlet.
3. Call Customer Service.
→ *Customer service; Page 4*


General Troubleshooting

Often when you encounter a problem it will be something minor. Before you call Customer Service, consider the suggestions and instructions below:

NOTICE: The troubleshooting items listed below can help resolve minor issues with your dryer quickly and without the necessity of a service call.

Determining the Problem

Problem	Possible cause(s)	Solution(s)
Dryer does not start. Start/Pause indicator light does not flash.	Power cord end not inserted at all or not inserted correctly.	Insert power cord end correctly.
	A fuse is blown or breaker is tripped.	Replace fuse or reset breaker. For replacing the fuses in the supplied Power Adapter. → <i>Replacing fuses in the Power Adapter - step-by-step; Page 33</i>
	Door not closed properly.	Check if laundry is caught in the door. Close the door until a click is heard.
The display panel and indicator lights go out, Start/Pause indicator light flashes.	Program not selected.	Rotate the program selector to desired program. → <i>Program selection table; Page 28</i>
	Energy-saving mode is activated.	Touch any button to activate the display. → <i>Environmentally friendly use of your dryer; Page 8</i>
The display panel and Start/Pause indicator switch off.	Sleep mode after setting the Finish in option is activated.	Touch any button to activate the display.
Dryer does not start. Start/Pause indicator flashes.	Start/Pause button not pressed.	Press the Start/Pause button to start the cycle.
 indicator light up.	Lint filter dirty.	Clean lint filter. → <i>Cleaning the lint filter; Page 30</i> Touch the Start/Pause button to reset the displayed indication and then touch Start/Pause button again to reset the appliance if necessary.
	Condenser dirty.	Clean Condenser. → <i>Cleaning the Condenser; Page 32</i> Touch the Start/Pause button to reset the displayed indication and then touch Start/Pause button again to reset the appliance if necessary.
DR indicator light up. Water has not drained completely.	Drain hose is blocked.	Check drain hose. → <i>Maintenance of drain hose; Page 33</i> Check drain hose connection conditions.
Water is leaking out.	Dryer is not leveled.	Level the dryer. → <i>Leveling the dryer; Page 18</i>
	The Condenser seal is dirty.	Clean the Condenser seal. → <i>Cleaning the Condenser; Page 32</i>
	Drain hose is leaking.	Check entire length of drain hose for leaks; replace if necessary. Check that hose is clamped on hose barb at back of the dryer securely.
Program terminates shortly after starting.	Laundry is not loaded.	Load the laundry. → <i>Loading the laundry; Page 24</i>
	Load too small for selected program.	Use time program. → <i>Program selection; Page 23</i> → <i>Program selection table; Page 28</i>
	Loaded laundry is too dry.	Check the loaded laundry. If it is dry, open the door, remove laundry and turn program selector to Off .
The door opens by itself.	The door not closed properly.	Close the door until a click is heard.

Problem	Possible cause(s)	Solution(s)
Creasing.	Laundry load exceeded. Unsuitable program selected.	Do not exceed the maximum load for selected program. Remove items of laundry immediately after the end of the program, hang them up and pull into shape. Turn program selector to Off . → <i>Program selection table; Page 28</i> Select Wrinkle Block button to prevent the laundry from creasing or wrinkling. → <i>Wrinkle Block; Page 29</i>
Drying result is not satisfactory (laundry feels too damp).	Warm laundry may feel more damp than it really is.	Remove items of laundry immediately after the end of the program and turn the program selector to Off .
	The selected program does not suit the load.	Use another drying program or, in addition, select the time program. → <i>Program selection table; Page 28</i>
	Dryness level is not adjusted.	Use Dry Level to adjust the dryness level. → <i>Dry Level; Page 29</i>
	Fine layer of limescale or detergent and textile care products residues on the moisture sensors.	Clean the moisture sensors. → <i>Cleaning the moisture sensors; Page 33</i>
	Program termination e.g. main power supply failure, door open or maximum drying time reached.	See the problem(s) mentioned in this table.
Drying time too long.	Initial load is too wet.	Spin laundry at higher speed in the washing machine, before drying. Switch off the dryer, and than turn it on again.
	Lint filter and/or Condenser is dirty.	Clean lint filter → <i>Cleaning the lint filter; Page 30</i> and/or Condenser. → <i>Cleaning the Condenser; Page 32</i>
	Insufficient supply of ambient air for cooling. Air inlet possibly blocked.	Ensure that cool ambient room air can freely circulate near the dryer. → <i>Installation for best performance; Page 9</i> Do not obstruct the air inlet on the front of the dryer.
	Ambient temperature is lower than 59°F/15°C or higher than 86°F/30°C .	Ensure the ambient room conditions are within this range.
Program does not start Finish in (remaining) time is displayed.	A delayed starting time has been selected and activated.	Drying cycle will begin at proper time to complete at the selected Finish in time.
Program does not start -  symbol lit up.	Childproof lock is activated.	Deactivate Childproof lock. → <i>Childproof lock; Page 25</i>
One or more indicator lights are flashing.	Lint filter or/and Condenser is dirty.	Clean lint filter or/and Condenser (see solution of the problem(s) in this table above).
	Installation conditions are not adequate.	Check the installation conditions. → <i>Electrical Connections; Page 16</i>
	Fault in program sequence or malfunction.	Switch off the dryer, allow it to cool down, switch back on and restart the program.
Power failure.		Remove laundry from the dryer immediately and spread out. This allows the heat to dissipate. Be careful as the door, the drum and the laundry may be hot.

If troubleshooting did not solve your issue contact Customer Service → *Customer service; Page 4*



9001883723
(0307)



BOSCH

1901 Main Street, Suite 600 • Irvine, CA 92614 • 1-800-944-2904
www.bosch-home.com • © 2020 BSH Home Appliances Corporation