

PH36HWS

24-INCH DEPTH WALL HOOD (36-INCH WIDTH)

PROFESSIONAL® SERIES



FEATURES & BENEFITS

- Pro Harmony® wall hoods add bold, distinct flair to your kitchen and are crafted to complete the ultimate cooking system
- 24" in depth, a perfect companion to Pro Harmony® Ranges and Rangetops
- Powerfully Quiet® system accepts integral, inline, and remote blowers
- Commercial-style baffle filters
- Beautiful illumination with multi-level, vivid LED lights

ACCESSORIES (OPTIONAL)

25 ft. Blower Connector Cable - EXTNCB25W

EXTNCB25W - For use with the following inline and remote blowers: VTR1FZ, VTR2FZ, VTI1FZ, VTI2FZ

Roofplates

RFPLT600P - For use with 600 CFM remote blower VTR1FZ

RFPLT1000P - For use with 1000 CFM remote blower VTR2FZ

| | |
|--|-----------|
| 6" Tall Duct Cover, 36" Wide | DC366W |
| 8' - 9' ceiling Telescoping Duct Cover, 36" Wide | DC3689W |
| 10' - 12' Ceiling Telescoping Duct Cover, 36" Wide | DC361012W |

Built-In Remote Control Panel

REMCPU - Ability to vertically install on cabinetry or wall to control hood in a convenient location

GENERAL PROPERTIES

Features

Multi-Level LED Lights with Fading Transitions, Automatic Mode, Check Filter Reminder Light, Delay Shut-Off

| | |
|-------------------------------|--------------------------------|
| Operating Mode | Ducted |
| Number of Speed Settings | 4-Stage |
| Motor Location | Blower (Sold Separately) |
| Number Of Lights | 2 |
| Bulb Type | LED |
| Light Lumens | 100 – 150 |
| Light Color | 3500 – 4000 °K |
| Total Power Of The Lamps | 2.4 W |
| Damper Included | Yes |
| Grease Filter Material | Aluminum* |
| Grease Filter Type | Commercial Style Baffle Filter |
| Home Connect™ (Wi-Fi Enabled) | No |

TECHNICAL DETAILS

| | |
|-----------|---------------------|
| Watts | See Chart on Page 3 |
| Current | See Chart on Page 3 |
| Volts | 120 V |
| Frequency | 60 HZ |
| Plug Type | Fixed Connection |

DIMENSIONS & WEIGHT

| | |
|---|-----------------------|
| Overall Appliance Dimensions (Width Of Canopy Included) (HxWxD) | 18" x 35 15/16" x 24" |
| Minimum Distance Above Gas / Electric Cooking Surface | 30" / 30" |
| Diameter of Air Duct Top | 10" |
| Diameter of Air Duct Back | 10" |
| Net Weight | 75 lbs |

ACCESSORIES (REQUIRED)

Blower (Sold Separately)

BLOWER OPTIONS

| | |
|---|-------------------|
| Remote Blower (Mounted to Roof or External Wall) | VTR1FZ - 600 CFM |
| | VTR2FZ - 1000 CFM |
| Inline Blower (Mounted Between Kitchen and External Wall) | VTI1FZ - 600 CFM |
| | VTI2FZ - 1000 CFM |
| Integrated Blower (Mounted in Hood) | VTN2FZ - 1000 CFM |

WARRANTY

| | |
|----------------------------------|--------|
| Limited Warranty Parts And Labor | 2 Year |
|----------------------------------|--------|

*Transition to aluminum starting in Fall 2022

PH36HWS

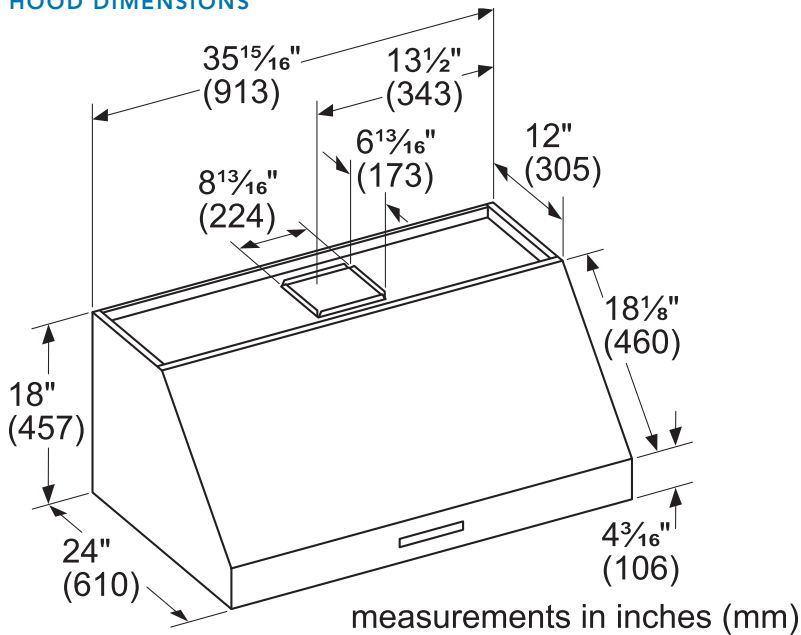
24-INCH DEPTH WALL HOOD

(36-INCH WIDTH)

PROFESSIONAL® SERIES



HOOD DIMENSIONS

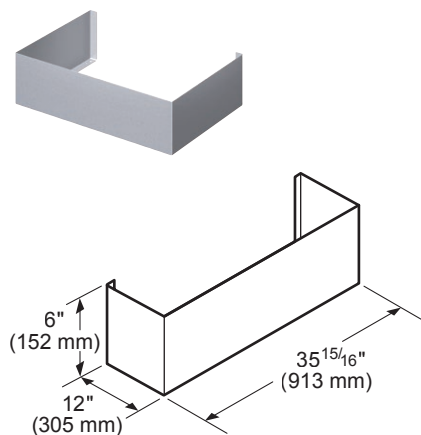


OPTIONAL ACCESSORIES

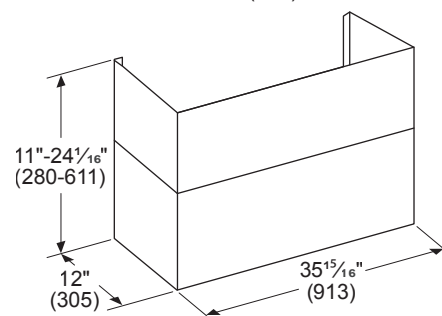
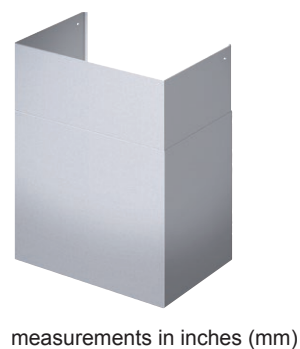
36" WIDE DUCT COVER

Stainless steel duct cover for wall hood applications

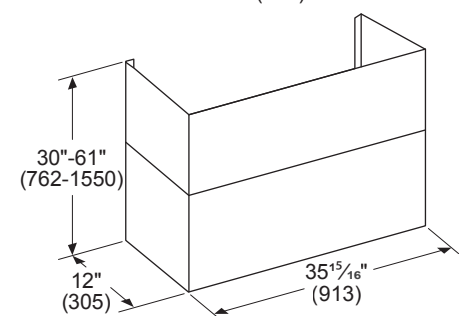
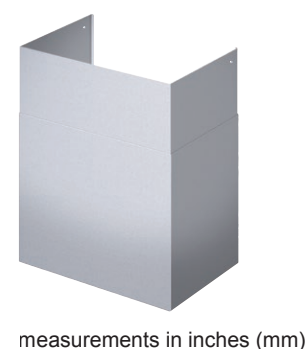
DC366W 6" TALL



DC3689W TELESCOPING FOR 8'-9' CEILINGS



DC361012W TELESCOPING FOR 10'-12' CEILINGS



REMOTE CONTROL PANEL REMCPW



Convenience at your fingertips: The remote control accessory offers the freedom to extend your hood controls to a more reachable spot

PH36HWS

24-INCH DEPTH WALL HOOD

(36-INCH WIDTH)

PROFESSIONAL® SERIES

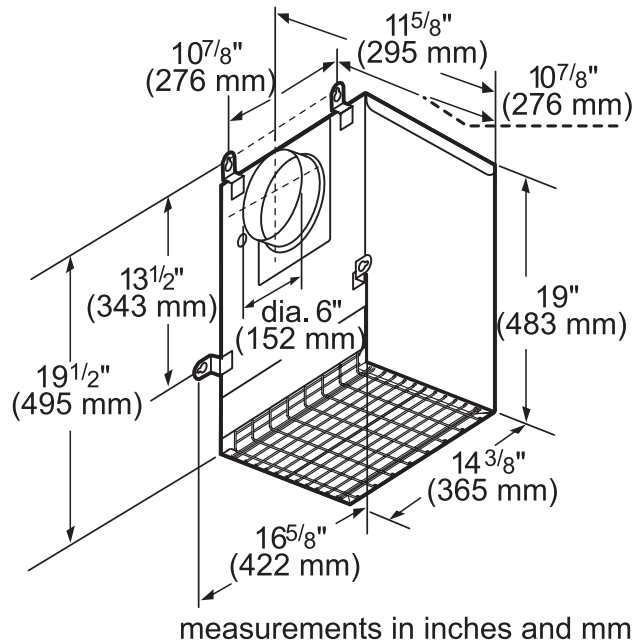


ELECTRIC LOAD (120V, 60HZ)

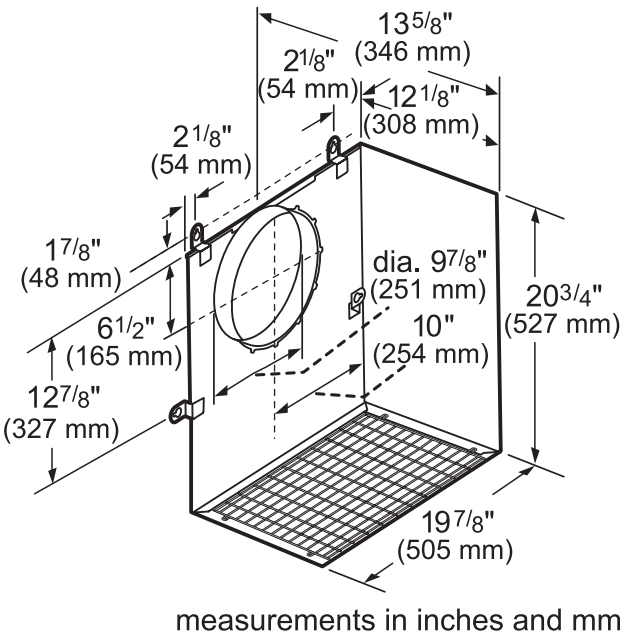
| | | Remote Blower | | Inline Blower | | Integrated Blower |
|---------|-------|---------------|--------|---------------|--------|-------------------|
| | | VTR1FZ | VTR2FZ | VTI1FZ | VTI2FZ | VTN2FZ |
| PH36HWS | Amps | 5.7 | 10.3 | 5.7 | 10.3 | 8.7 |
| | Watts | 684 | 1,236 | 684 | 1,236 | 1,044 |

REMOTE BLOWERS (MOUNTED TO ROOF OR EXTERNAL WALL)

VTR1FZ-600 CFM



VTR2FZ-1000 CFM



PH36HWS

24-INCH DEPTH WALL HOOD

(36-INCH WIDTH)

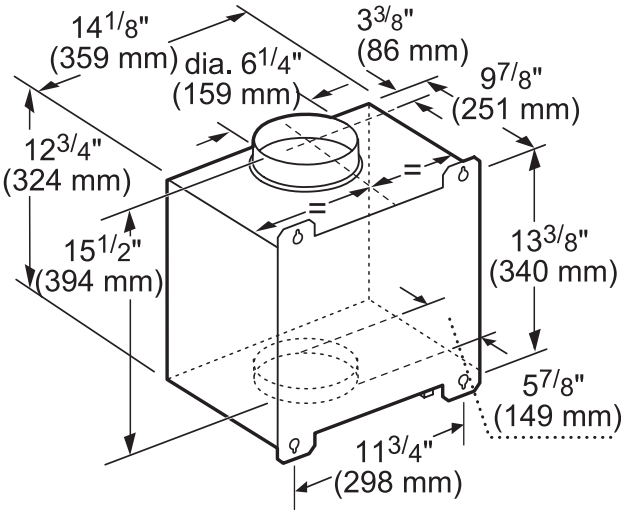
PROFESSIONAL® SERIES



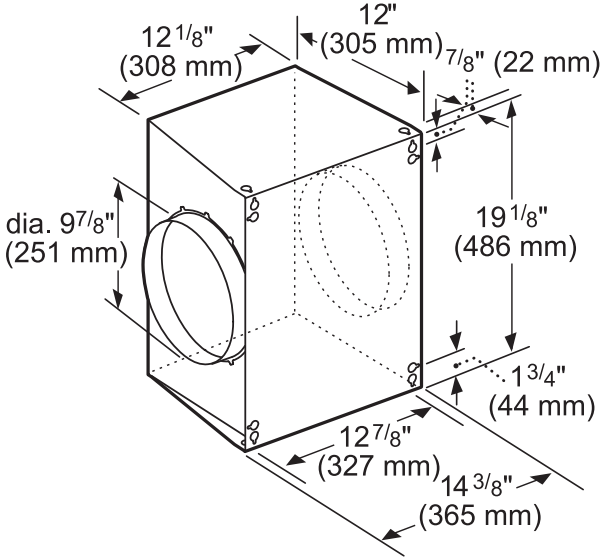
INLINE BLOWERS (MOUNTED BETWEEN KITCHEN AND EXTERNAL WALL)

VTI1FZ-600 CFM

VTI2FZ-1000 CFM



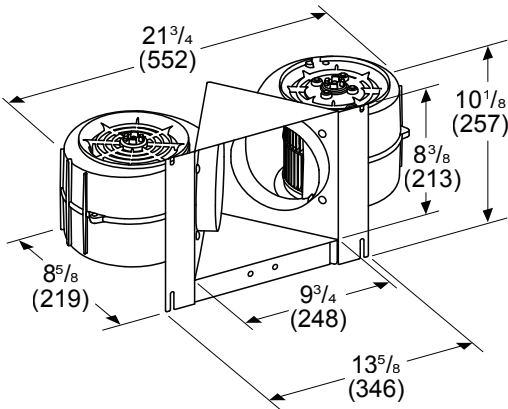
measurements in inches and mm



measurements in inches and mm

INTEGRATED BLOWERS (MOUNTED IN HOOD)

VTN2FZ-1000 CFM



Measurements in inches (mm)

HVI PERFORMANCE VALUES (CFM & SONES)

| PH36HWS WITH BLOWER VTN2FZ | | | | | | | | |
|----------------------------|---------------------------------|---------------|-----------------|---------------|------------|---------------|------------|---------------|
| Exhaust | Pressure (in. H ₂ O) | | Amps (@ 0.1 SP) | | CFM | | Sones | |
| | High Speed | Working Speed | High Speed | Working Speed | High Speed | Working Speed | High Speed | Working Speed |
| Horizontal | 0.1 | 0.017 | 6.88 | 3.23 | 900 | 360 | 15.5 | 3.0 |
| Vertical | 0.1 | 0.015 | 6.89 | 3.21 | 920 | 360 | 15.5 | 3.0 |

PH36HWS

24-INCH DEPTH WALL HOOD

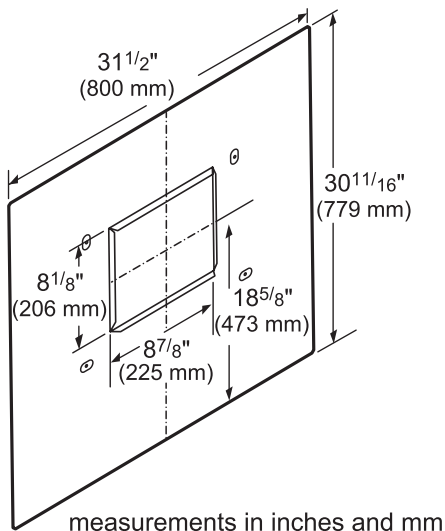
(36-INCH WIDTH)

PROFESSIONAL® SERIES

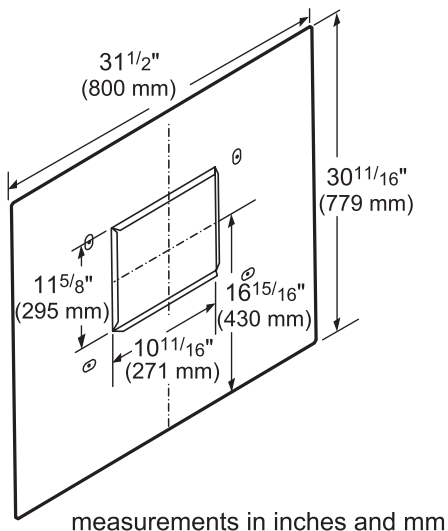


REMOTE BLOWER ACCESSORIES

ROOFPLATE-RFPLT600P



ROOFPLATE-RFPLT1000P



EXTNCB25W

For use with the following Inline and Remote Blowers: VTR1FZ, VTR2FZ, VTI1FZ, VTI2FZ

These warranties give you specific legal rights and you may have other rights that vary from state to state. Limited warranty from date of purchase. For complete warranty details, refer to your Use & Care manual, or ask your dealer.

Specifications are for planning purposes only. Refer to installation instructions and consult your countertop supplier prior to making counter opening. Consult with a heating and ventilation engineer for your specific ventilation requirements. For the most detailed information, refer to installation instructions accompanying product or write to Thermador indicating the model number. Specifications are correct at time of printing. Thermador reserves the right to change product specifications or design without notice. Some models are certified for use in Canada. Thermador is not responsible for products that are transported from the U.S. for use in Canada.