

DO30PM/S/PH



FEATURES

Cook for a crowd, with two ovens and twice the capacity

Preheats faster and cooks more consistently across all racks due to its advanced Dual VertiCross™ convection system

Assures predictably delicious results with a variety of modes, including Convection Roast, Proof, and Dehydrate

Prepares 50 popular dishes with the Gourmet feature that automatically adjusts cook times and temperatures

Handles multiple dishes simultaneously with our largest capacity oven (13 percent larger)

Insert a temperature probe to tell you exactly when it is done—and in gourmet mode, it will alert you the moment the dish is ready

Uncomplicate cooking with innovative, interactive color touchscreen controls

Makes a statement with Wolf's iconic red control knobs

Integrates beautifully into surrounding cabinetry with flush installation

Ensures excellent visibility via three bright halogen lights and large, triple-panel-glass door windows

Master your technique with tips and recipes from the Mastering the M series oven guide

ACCESSORIES

30" Broiler Pan

30" Premier Baking Sheet

Bake Stone Kit

Black Knobs

Black Knobs

Dehydration Kit

Full-Extension Ball Bearing Rack

Multi-Function Pan

Oven Rack

Oven Rack Set (3)

Red Knobs

Stainless Knobs

Stainless Knobs

Temperature Probe

Accessories available through an authorized dealer.

For local dealer information, visit subzero-wolf.com/locator.



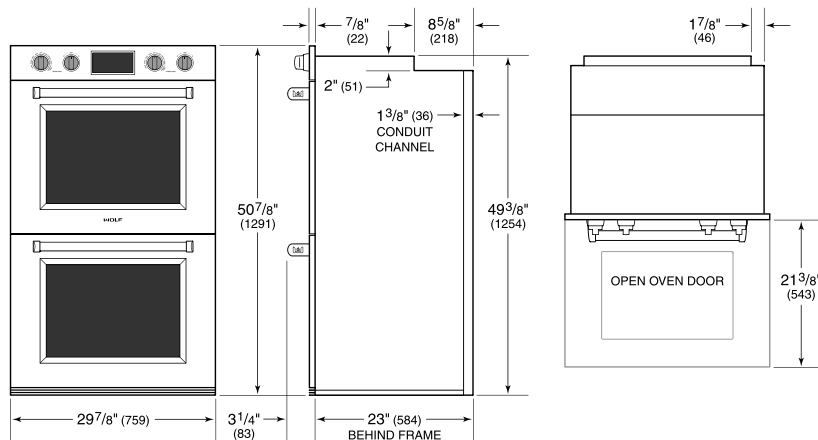
KNOB OPTIONS



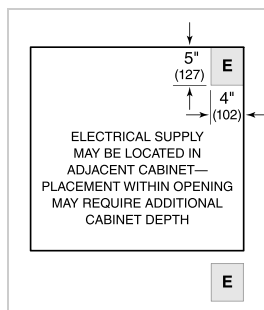
PRODUCT SPECIFICATIONS

| | |
|----------------------------|--------------------------------|
| Model | DO30PM/S/PH |
| Dimensions | 29 7/8"W x 50 7/8"H x 23"D |
| Oven 1 Interior Dimensions | 25 1/4"W x 17 1/2"H x 19 7/8"D |
| Oven 2 Interior Dimensions | 25 1/4"W x 17 1/2"H x 19 7/8"D |
| Overall Capacity | 5.1 cu. ft. |
| Usable Capacity | 3.3 cu. ft. |
| Door Clearance | 21 3/8" |
| Electrical Supply | 240/208 VAC, 60 Hz |
| Electrical Service | 50 amp dedicated circuit |
| Conduit Length | 5 Feet |

DIMENSIONS

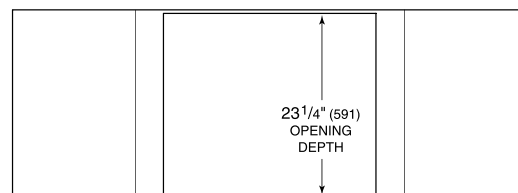


ELECTRICAL

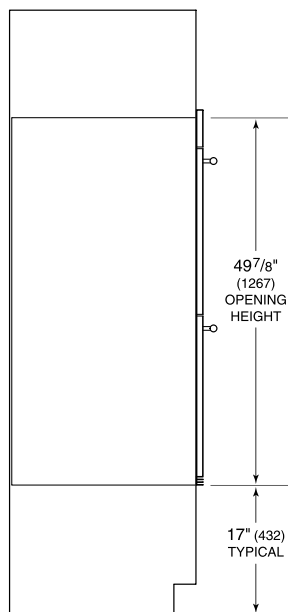


NOTE: Dimensions in parenthesis are in millimeters unless otherwise specified

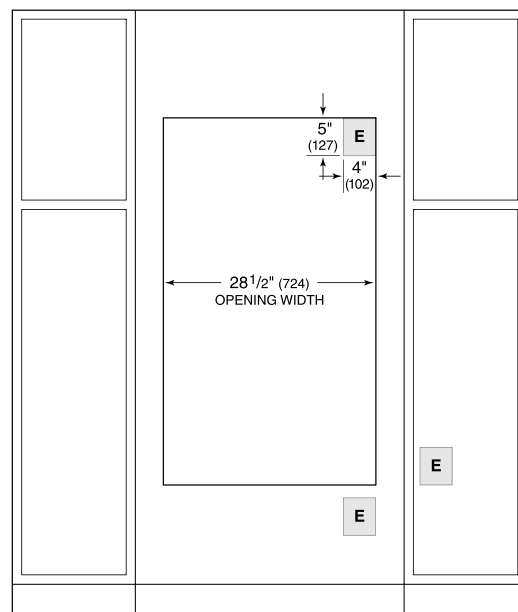
STANDARD INSTALLATION



TOP VIEW



SIDE VIEW



FRONT VIEW

NOTE: Location of electrical supply within opening may require additional cabinet depth.